



GEJ-5143 Installation Instructions

Handle Padlock Device

For E150 Line

Catalog No.

TEFPD1 1 Qty.

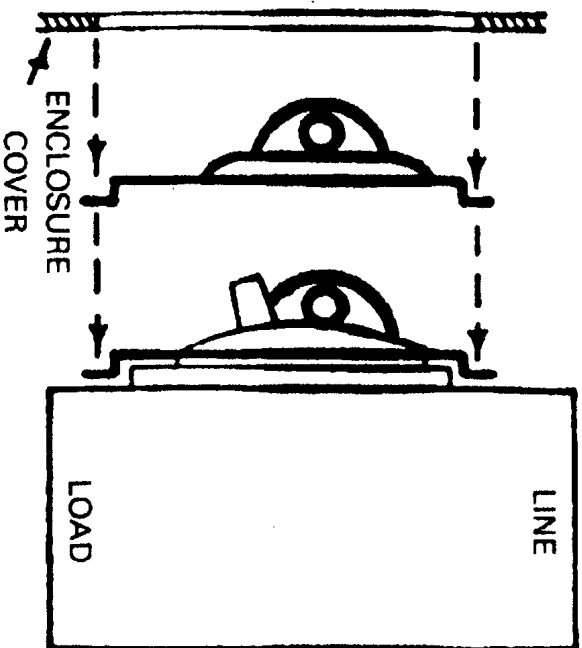
INSTALLATION INSTRUCTIONS:

DESCRIPTION:

Padlock device fits between breaker and enclosure cover.

ASSEMBLY:

1. Remove enclosure cover.
2. Press padlock device over breaker handle boss, padlock hole to the left, line end up.
3. Replace enclosure cover.



GE Electrical Distribution & Control General Electric Company, Plainville, CT 06062

©1990 General Electric Company

GEJ-5143 0790 PS