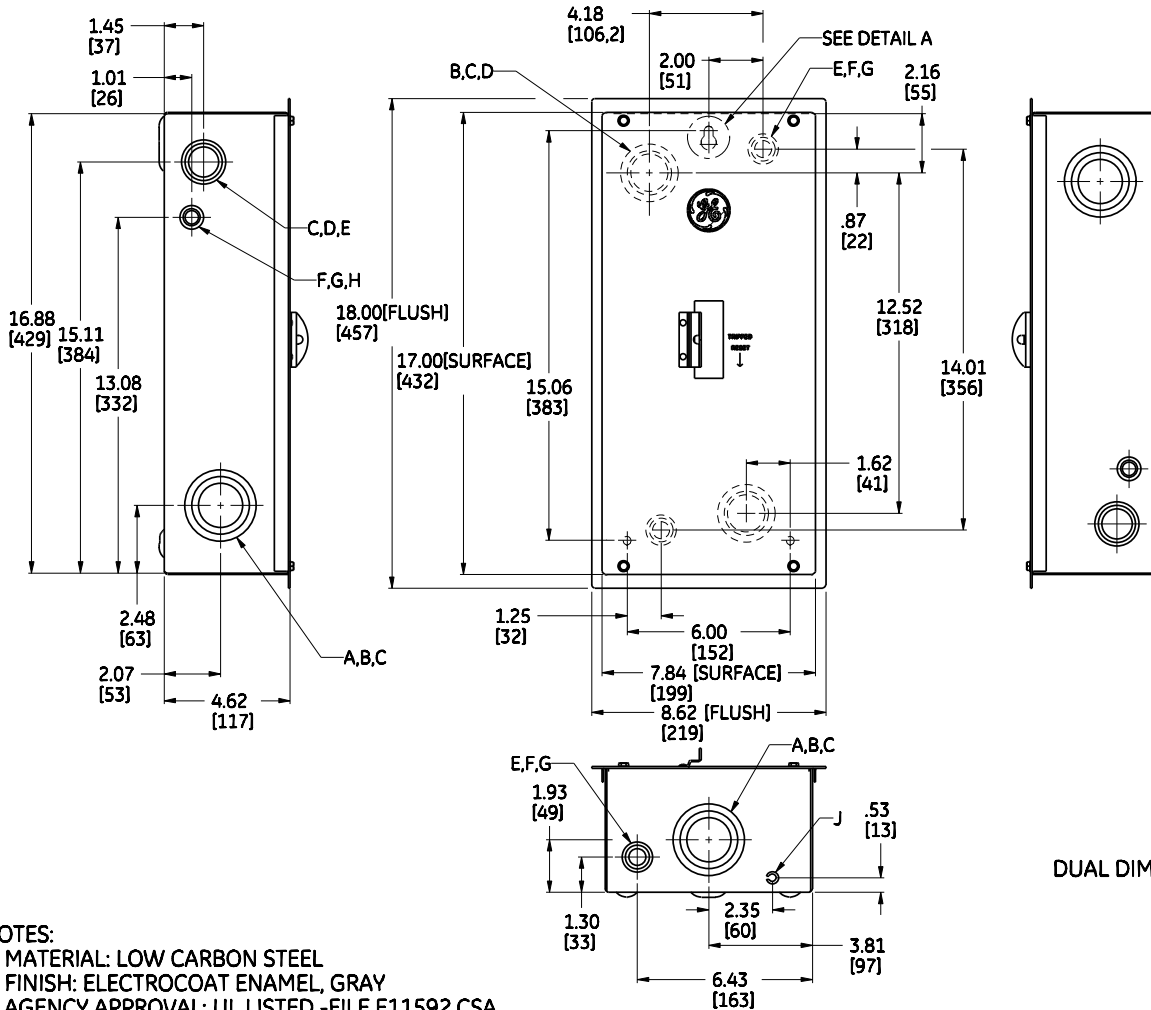


CIRCUIT BREAKER TERMINAL LUG DATA			
CIRCUIT BREAKER CAT NO. PREFIX	AMPERE RATING	LUG TYPE	WIRE SIZE (AWG\KCMIL)
TEB, TED, THED, TEC	15-100	TCAL14	(1) #14-8 CU-AL
		TCAL12	(1) #14-3 CU (1) #12-1 AL
		TCAL12A	(1) #6-2/0 CU (1) #4-2/0 AL
		TCAL15	(1) #3-3/0 CU (1) #1-3/0 AL
SEDA, SEHA, SELA, SEPA	15-100	TCAL18	(1) #12-3/0 CU-AL



FIELD INSTALLABLE NEUTRAL ASSEMBLY AND GROUND KIT			
CAT NO. PREFIX	TYPE	AMPERE RATING	WIRE SIZE (AWG\KCMIL)
TGL1	GND KIT	70-125	(4) #14-8 CU (4) #12-8 AL (3) #14-4 CU (3) #6-4 AL
INCLUDED	NEUTRAL ASM	100	(1) #14-1/0 CU (1) #12-1/0 AL

SYMBOLS	CONDUIT SIZE		DIAMETER	
	IN	MM	IN	MM
A	2 1/2	64	3	76
B	2	51	2 1/2	64
C	1 1/2	38	2	51
D	1 1/4	32	1 3/4	45
E	1	25.4	1 3/8	35
F	3/4	20	1 1/8	29
G	1/2	13	7/8	22
H	3/8	10	3/8	10
J	9/32	7	9/32	7

- NOTES:
1. MATERIAL: LOW CARBON STEEL
 2. FINISH: ELECTROCOAT ENAMEL, GRAY
 3. AGENCY APPROVAL: UL LISTED -FILE E11592,CSA
 4. SUITABLE FOR USE AS SERVICE EQUIPMENT WHEN NEUTRAL ASSEMBLY IS INSTALLED
 5. THE SHORT CIRCUIT RATING OF THIS ENCLOSED CIRCUIT BREAKER IS EQUAL TO THE INTERRUPTING RATING, AT THE SUPPLY VOLTAGE MARKED ON THE CIRCUIT BREAKER INSTALLED
 6. CONSULT BUYLOG FOR ALTERNATIVE LUGS

FOR USE WITH GE TYPE BREAKER
TEB, TED, THED & TEC
SEDA, SEHA, SELA & SEPA

DUAL DIMENSIONS INCHES
(MILLIMETERS)

 imagination at work

OUTLINE DRAWING - NEMA TYPE 1 ENCLOSURE
TE100F, TE100S

DWG NO.	DATE	REV
208C2891SH3	06/23/2009	03