

# RENEWAL PARTS

## IC2800-1178 CONTACTORS Forms AA thru AW



NOTE:—When ordering parts for a form of the compensator not covered by this bulletin, give reference number, description of part, complete nameplate reading, and above bulletin (GEF) number. Do not use catalog number when form for which the parts are needed is not covered by the bulletin.

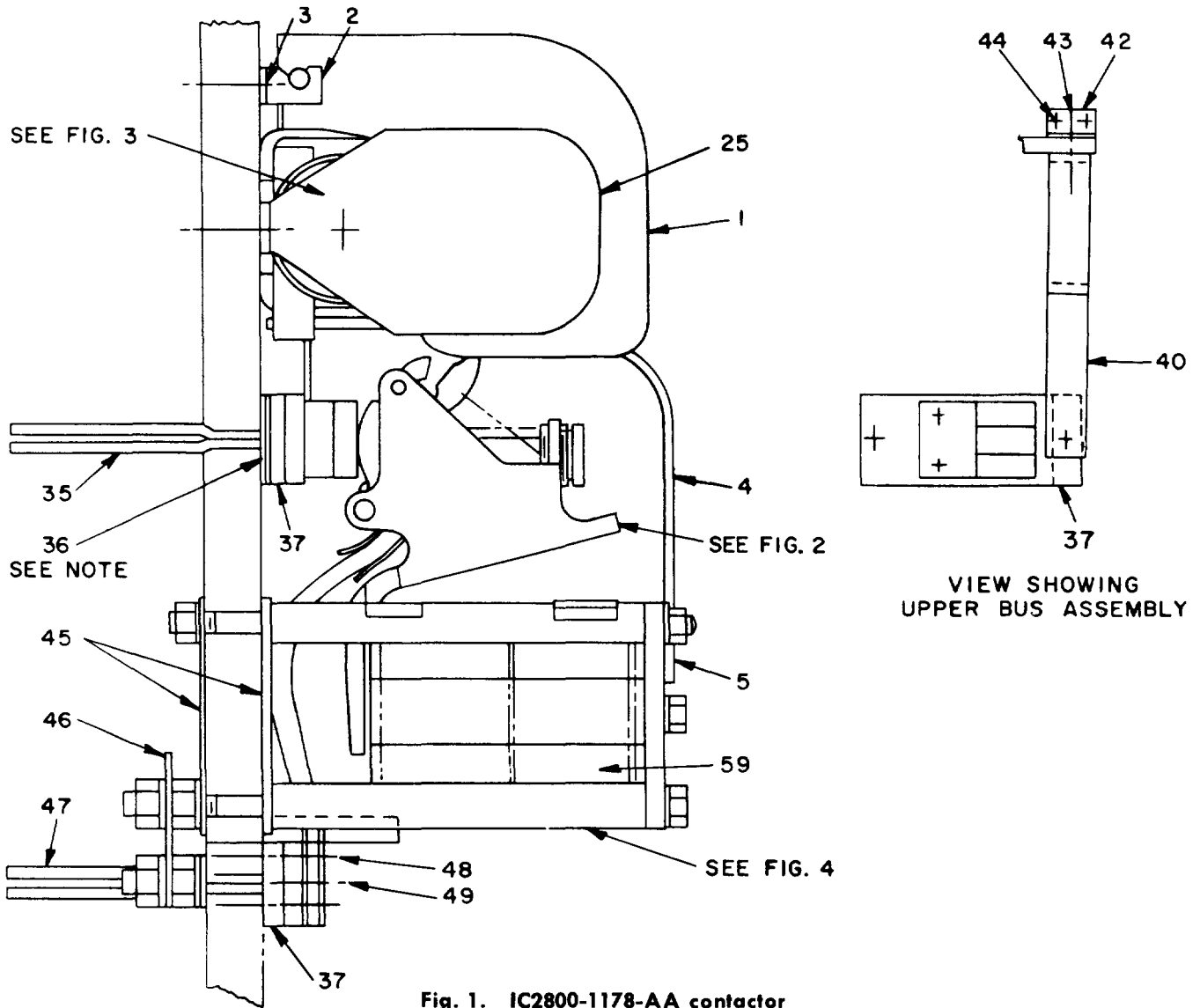


Fig. 1. IC2800-1178-AA contactor

When ordering renewal parts, give quantity, catalog number, description of each item required, and complete nameplate reading.



PARTS RECOMMENDED FOR NORMAL STOCK

Fig. No.	Ref. No.	No. Required for IC2800-1178																		Catalog Number	Description
		AA	AB	AD	AE	AF	AG	AH	AJ	AK	AL	AM	AN	AP	AR	AS	AT	AV	AW		
1	1	1	1	1	1	1	1	1	1	1	-	1	1	-	-	-	-	1	106B9292G1	Arc chute complete	
3	33	1	1	1	1	-	-	1	1	1	-	1	1	-	-	-	-	1	2458490	Stationary arcing contact tip	
2	17	1	1	1	1	1	1	1	1	1	1	1	1	1	1	1	1	1	2459875	Movable arcing contact tip	
2	21	1	1	1	1	1	1	1	1	1	1	1	1	1	1	1	1	1	4338327G2	Shunt for movable arcing contact tip	
2	20	1	-	1	1	1	1	1	1	1	1	1	-	1	1	1	1	1	2413372	Compression spring for movable arcing contact tip	
		1	1	1	1	1	1	1	1	1	1	1	1	1	1	1	1	1	9034388G1	Main stationary contact tip	
2	10	1	1	1	1	1	1	1	1	1	1	1	1	1	1	1	1	1	3866756G2	Main movable contact tip	
2	15	1	1	1	1	1	1	1	1	1	1	1	1	1	1	1	1	1	4338327G1	Shunt for main movable contact	
2	11	1	1	1	1	1	1	1	1	1	1	1	1	1	1	1	1	1	2413371	Compression spring for main movable contact	
4	62	-	2	-	-	-	-	-	-	-	-	-	2	-	-	-	-	-	2413382	Tension spring for armature	
		‡	‡	‡	‡	‡	‡	‡	‡	‡	‡	‡	‡	‡	‡	‡	‡	‡	-----	Set of interlock contacts (see table on page 3)	
4	59	2	2	2	2	2	2	2	2	2	2	2	2	2	2	2	2	2	-----	Operating coil (see table below)	

‡ Quantity variable

OPERATING COILS, PICK-UP AND HOLDING RESISTORS, RECTIFIERS, AUXILIARY CONTACTORS, AND AUXILIARY CONTACTOR COILS

NOTE: The number following the form letters in the IC Designation identifies the Operating Coils, Pick-up Resistors and Rectifiers. Each must be ordered separately from the table below.

EXAMPLE: IC2800-1178 requires coil number 12, Cat. No. 22D95G8A, pick-up resistor A100G100EA-TH, holding resistor A100G1500EA-TH, rectifier IC3500A403C5 and auxiliary contactor CR2810A14AC4.

Coil No.	Coil Catalog No.	No. Req'd	Pick-up Resistor	No. Req'd	Holding Resistor	No. Req'd	Rectifier	No. Req'd	**Auxiliary Contactor	No. Req'd
2	22D95G1A	2	-----	-	-----	-	-----	-	-----	-
3	22D95G1A	2	-----	-	-----	-	-----	-	-----	-
4	22D95G2A	2	-----	-	-----	-	-----	-	-----	-
5	22D95G2A	2	-----	-	-----	-	-----	-	-----	-
6	22D95G3A	2	-----	-	-----	-	-----	-	-----	-
7	22D95G4A	2	-----	-	-----	-	-----	-	-----	-
8	22D95G5A	2	-----	-	-----	-	-----	-	-----	-
9	22D95G6A	2	-----	-	-----	-	-----	-	-----	-
10	22D95G6A	2	-----	-	-----	-	-----	-	-----	-
11	22D95G7A	2	-----	-	-----	-	-----	-	-----	-
12	22D95G8A	2	-----	-	-----	-	-----	-	-----	-
†12	22D95G8A	2	A100G100EA-TH	1	A100G1500EA-TH	1	IC3500A403C5	1	CR2810A14AC4	1
13	22D95G9A	2	-----	-	-----	-	-----	-	-----	-
14	22D95G9A	2	-----	-	-----	-	-----	-	-----	-

\*\* For parts of auxiliary contactor, see GEF-4210.

† For AC applications only.

OPERATING COILS, PICK-UP AND HOLDING RESISTORS, RECTIFIERS,  
AUXILIARY CONTACTORS, AND AUXILIARY CONTACTOR COILS (CONT'D)

Coil No.	Coil Catalog No.	No. Req'd	Pick-up Resistor	No. Req'd	Holding Resistor	No. Req'd	Rectifier	No. Req'd	**Auxiliary Contactor	No. Req'd
15	22D95G10A	2	----	-	----	-	----	-	----	-
16	22D95G10A	2	----	-	----	-	----	-	----	-
17	22D95G11A	2	----	-	----	-	----	-	----	-
18	22D95G16A	2	----	-	----	-	----	-	----	-
19	22D95G4A	2	----	-	A100G850EA-TH	1	----	-	----	-
20	22D95G18A	2	----	-	----	-	----	-	----	-
21	22D95G2A	2	----	-	----	-	----	-	----	-
22	22D95G17A	2	----	-	----	-	----	-	----	-
23	22D95G20A	2	----	-	----	-	----	-	----	-
24	22D95G21A	2	----	-	----	-	----	-	----	-
25	22D95G2A	2	----	-	A100G150EA-TH	1	----	-	----	-
26	22D95G23A	2	----	-	----	-	----	-	----	-
27	22D95G1A	2	----	-	A100G60EA-TH	1	----	-	----	-
28	22D95G24A	2	----	-	----	-	----	-	----	-
29	22D95G25A	2	----	-	----	-	----	-	----	-
30	22D95G21A	2	----	-	----	-	----	-	----	-
31	22D95G27A	2	----	-	----	-	----	-	----	-
32	22D95G25A	2	----	-	----	-	----	-	----	-
33	22D95G21A	2	----	-	----	-	----	-	----	-
† 33	22D95G21A	2	----	-	A100G125EA-TH	1	IC3500A403C2	1	CR2810A14AC2	1
34	22D95G33A	2	----	-	----	-	----	-	----	-
35	22D95G7A	2	----	-	----	-	----	-	----	-
36	22D95G43A	2	----	-	----	-	----	-	----	-
37	22D95G19A	2	----	-	----	-	----	-	----	-
39	22D95G9A	2	----	-	----	-	----	-	----	-
40	22D95G45A	2	----	-	----	-	----	-	----	-
41	22D95G15A	2	----	-	----	-	----	-	----	-
† 41	22D95G15A	2	----	-	A100G500EA-TH	1	IC3500A403C6	1	CR2810A14AC3	1
102	22D95G21A	2	----	-	A100G100EA-TH	1	----	-	----	-
103	22D95G5A	2	----	-	A100G500EA-TH	1	----	-	----	-
105	22D95G39A	2	----	-	A100G25EA-TH	1	----	-	----	-
106	22D95G23A	2	----	-	A100G2500EA-TH	1	----	-	----	-
107	22D95G14A	2	----	-	A100G1500EA-TH	1	----	-	----	-

\*\* For parts of auxiliary contactor, see GEF-4210.

† For AC applications only.

IC2800-1178 CONTACTORS

GEF-4324

OPERATING COILS, PICK-UP AND HOLDING RESISTORS, RECTIFIERS,  
AUXILIARY CONTACTORS, AND AUXILIARY CONTACTOR COILS (CONT'D)

Coil No.	Coil Catalog No.	No. Req'd	Pick-up Resistor	No. Req'd	Holding Resistor	No. Req'd	Rectifier	No. Req'd	**Auxiliary Contactor	No. Req'd
†107	22D95G14A	2	A100G100EA-TH	1	A100G2500EA-TH	1	IC3500A403C8	1	{ CR2810A14AC5 }*CR2810A14AC6	1
108	22D95G26A	2	-----	-	A100G75EA-TH	1	-----	-	-----	-
109	22D95G1A	2	-----	-	A100G750EA-TH	1	-----	-	-----	-
110	22D95G7A	2	-----	-	A100G150EA-TH	1	-----	-	-----	-
113	22D95G25A	2	-----	-	A100G25EA-TH	1	-----	-	-----	-
115	22D95G2A	2	-----	-	A100G50EA-TH	1	-----	-	-----	-
118	22D95G16A	2	-----	-	A100G10EA-TH	1	-----	-	-----	-
120	22D95G5A	2	-----	-	A100G50EA-TH	1	-----	-	-----	-
123	22D95G33A	2	-----	-	A100G25EA-TH	1	-----	-	-----	-
126	22D95G6A	2	-----	-	A100G1250EA-TH	1	-----	-	-----	-
138	22D95G15A	2	-----	-	A100G400EA-TH	1	-----	-	-----	-
141	22D95G10A	2	-----	-	-----	-	-----	-	-----	-

\* For 600-volt applications.

\*\* For parts of auxiliary contactor, see GEF-4210.

† For AC applications only.

OPERATING COILS FOR IC2800-1178-AB AND AN CONTACTOR (2 Required)

Coil No.	Coil Cat. No.	‡Holding Resistor Ohms	Coil No.	Coil Cat. No.	‡Holding Resistor Ohms	Coil No.	Coil Cat. No.	‡Holding Resistor Ohms	Coil No.	Coil Cat. No.	‡Holding Resistor Ohms
2	22D95G11	50	7	22D95G12	800	11	22D95G33	12.5	15	22D95G34	220
3	22D95G12	200	8	22D95G12	900	12	22D95G21	50	16	22D95G34	700
5	22D95G12	220	9	22D95G13	12.5	13	22D95G34	175	17	22D95G34	800
6	22D95G12	700	10	22D95G9	70	14	22D95G34	200	18	22D95G34	900

‡ Catalog number of coil does not include holding resistor. Order separately.

Fig. 5 and 6, Ref. No. 96 - ELECTRICAL INTERLOCKS

NOTE: The last letter in the IC Designation identifies the electrical interlocks.

EXAMPLE: IC2800-1178-AA-202-BG requires interlock letters BG, four (4) Cat. No. IC2956A200C interlocks.

Inter-lock Letter	*Location	Interlock Switch Unit Cat. No.	No. Req'd	†Interlock Contacts Set Cat. No.	δInterlock Mounting and Operating Parts		Inter-lock Letter	*Location	Interlock Switch Unit Cat. No.	No. Req'd	†Interlock Contacts Set Cat. No.	δInterlock Mounting and Operating Parts	
					Cat. No.	No. Req'd						Cat. No.	No. Req'd
B	l	IC2956A200C		6960053G3	723B261G1	1	W	ul	IC2956A200C	1	6960053G3	112B9742G1	1
†C	l, r	IC2956A200C †	2	6960053G3	723B261G1	2		ur	IC2956A200A	1	6960053G3		
D	r	IC2956A200C	1	6960053G3	723B261G1	1	Y	ul	IC2956A200C	1	6960053G3	112B9742G2	1
E	ur, ll, r	IC2956A200C	1	6960053G3	112B9742G2	1		ur	IC2956A200B	1	6960053G3		
		IC2956A200A	2	6960053G3			BB	l	IC2956A200C	1	6960053G3	723B261G1	1
	ul	IC2956A200B	1	6960053G3			r	IC2956A205C	2	6960053G24	6960053G3	723B261G2	1
F	ul, r	IC2956A200C	2	6960053G3	112B9742G2	1	BE	ul, r	IC2956A200C	2	6960053G3	112B9742G2	1
	ll, r	IC2956A200B	2	6960053G3				ll, r	IC2956A200A	2	6960053G3		
G	all	IC2956A200C	4	6960053G3	112B9742G2	1	BF	ul, r	IC2956A200C	2	6960053G3		
H	ul, ur	IC2956A200C	1	6960053G3	112B9742G2	1		ll, r	IC2956A200B	2	6960053G3	112B9742G2	1
	ll, r	IC2956A200A	3	6960053G3			BG	ul, ll, lr	IC2956A200C	3	6960053G3		
	ul	IC2956A200C	1	6960053G3				ul	IC2956A200B	1	6960053G3	112B9742G2	1
J	ur	IC2956A200A	1	6960053G3	112B9742G2	1	BH	ul	IC2956A200C	1	6960053G3	112B9742G2	1
	ll, r	IC2956A200B	2	6960053G3				ur, ll, r	IC2956A200A	3	6960053G3		
	ul, ll, r,	IC2956A200C	3	6960053G3	112B9742G2	1		ul	IC2956A200C	1	6960053G3		
K	ur	IC2956A200A	1	6960053G3			BJ	ur	IC2956A200A	1	6960053G3	112B9742G2	1
	ul	IC2956A200C	1	6960053G3				ll, r	IC2956A200B	2	6960053G3		
L	ur	IC2956A200B	1	6960053G3	112B9742G2	1	BK	ul, ll, r	IC2956A200C	3	6960053G3	112B9742G2	1
	ll, r	IC2956A200A	2	6960053G3				ur	IC2956A200A	1	6960053G3		
	ul, ur	IC2956A200C	1	6960053G3	112B9742G2	1	BL	ul	IC2956A200C	1	6960053G3		
M	ll, r	IC2956A200B	3	6960053G3				ur	IC2956A200B	1	6960053G3	112B9742G2	1
	ul, u, r,	IC2956A200C	3	6960053G3	112B9742G2	1		ll, lr	IC2956A200A	2	6960053G3		
N	ur	IC2956A200B	1	6960053G3			BM	ul	IC2956A200C	1	6960053G3	112B9742G2	1
	ul, r	IC2956A200C	2	6960053G3				ur, ll, r	IC2956A200B	3	6960053G3		
P	ll	IC2956A200B	1	6960053G3	112B9742G2	1	BN	ul, ll, r	IC2956A200C	3	6960053G3	112B9742G2	1
	lr	IC2956A200A	1	6960053G3				ur	IC2956A200B	1	6960053G3		
	ul, r, ll	IC2956A200C	3	6960053G3	112B9742G2	1	BP	ul, r	IC2956A200C	2	6960053G3		
R	lr	IC2956A200A	1	6960053G3				ll	IC2956A200B	1	6960053G3	112B9742G2	1
	ul	IC2956A200C	1	6960053G3				lr	IC2956A200A	1	6960053G3		
S	ll	IC2956A200B	1	6960053G3	112B9742G2	1	BR	u, r, ll	IC2956A200C	3	6960053G3	112B9742G2	1
	ur, lr	IC2956A200A	2	6960053G3				lr	IC2956A200A	1	6960053G3		
	l	IC2956A200C	2	6960053G3	112B9742G2	1	BS	ul	IC2956A200C	1	6960053G3		
T	r	IC2956A200A	2	6960053G3				ll	IC2956A200B	1	6960053G3	112B9742G2	1
	ul, r	IC2956A200C	2	6960053G3	112B9742G1	1		ur, lr	IC2956A200A	2	6960053G3		
V							BT	ul, ll	IC2956A200	2	6960053G3	112B9742G2	1
								ur, lr	IC2956A200	2	6960053G3		

IC2800-1178 CONTACTORS

\* ul, upper left; ur, upper right; ll, lower left; lr, lower right.

† Set of interlock contacts includes movable and stationary contacts, springs, and contact-holding screws for one switch unit.

‡ Requires pin Cat. 2480060. Cat. No. of interlocks does not include pin.

Fig. 5 and 6, Ref. No. 96 - ELECTRICAL INTERLOCKS (CONT'D)

Inter-lock Letter	*Location	Interlock Switch Unit Cat. No.	No. Req'd	†Interlock Contacts Set Cat. No.	δInterlock Mounting and Operating Parts		Inter-lock Letter	*Location	Interlock Switch Unit Cat. No.	No. Req'd	†Interlock Contacts Set Cat. No.	δInterlock Mounting and Operating Parts	
					Cat. No.	No. Req'd						Cat. No.	No. Req'd
BV	ul, ur	IC2956A200C	2	6960053G3	112B9742G1	1	HD	ul	IC2956A200B	1	6960053G3	112B9742G3	1
BW	ul	IC2956A200C	1	6960053G3	112B9742G1	1	HE	ul	IC2956A200A	1	6960053G3	112B9742G3	1
	ur	IC2956A200A	1	6960053G3					IC2956A200B	1	6960053G3		
BY	ul	IC2956A200C	1	6960053G3	112B9742G1	1	HF	ul	IC2956A200C	1	6960053G3	112B9742G3	1
	ur	IC2956A200B	1	6960053G3					IC2956A200B	1	6960053G3		
CE	ul, r, lr	IC2956A200C	3	6960053G3	112B9742G2	1	HG	ul	IC2956A200C	1	6960053G3	112B9742G3	1
	ll	IC2956A205C	1	6960053G3					IC2956A200A	1	6960053G3		
CF	ul	IC2956A200B	1	6960053G3	112B9742G1	1	HH	ul	IC2956A200C	1	6960053G3	112B9742G3	1
	ur	IC2956A200C	1	6960053G3					IC2956A200B	1	6960053G3		
CG	l, r	IC2956A200B	2	6960053G3	112B9742G1	1	HJ	ul	IC2956A200B	2	6960053G3	112B9742G3	1
	l	IC2956A200B	1						IC2956A200B	1	6960053G3		
CH	r	IC2956A200C	1	6960053G3	112B9742G1	1	HK	ul	IC2956A200C	1	6960053G3	112B9742G3	1
	l	IC2956A200B	1						IC2956A200C	1	6960053G3		
CJ	r	IC2956A200C	1	6960053G3	112B9742G1	1	JA	ul	IC2956A200A	2	6960053G3	112B9742G4	1
	ul	IC2956A200B	1						IC2956A200A	1	6960053G3		
CK	ur, lr, ll	IC2956A200C	3	6960053G3	112B9742G2	1	JB	ul	IC2956A200B	1	6960053G3	112B9742G4	1
	ul	IC2956A200B	1						IC2956A200A	1	6960053G3		
CL	ur, lr	IC2956A200C	2	6960053G3	112B9742G1	1	JC	ul	IC2956A200C	1	6960053G3	112B9742G4	1
	r, l	IC2956A205C	1						IC2956A200B	1	6960053G3		
CM	ul, ur, lr	IC2956A200C	3	6960053G3	112B9742G1	1	JD	ul	IC2956A200A	1	6960053G3	112B9742G4	1
	ll	IC2956A200B	1						IC2956A200B	1	6960053G3		
CN	all	IC2956A200C	4	6960053G3	112B9742G2	1	JE	ul	IC2956A200C	1	6960053G3	112B9742G4	1
	ul	IC2956A200B	1						IC2956A200B	1	6960053G3		
CP	ur, ll, lr	IC2956A200C	3	6960053G3	112B9742G2	1	JF	ul	IC2956A200A	1	6960053G3	112B9742G4	1
	ul	IC2956A200C	1						IC2956A200C	1	6960053G3		
CR	ll	IC2956A200A	1	6960053G3	112B9742G2	1	JG	ul	IC2956A200A	1	6960053G3	112B9742G4	1
	ul, lr	IC2956A200C	2						IC2956A200C	1	6960053G3		
DE	ur	IC2956A200B	1	6960053G3	112B9742G2	1	JH	ul	IC2956A200B	1	6960053G3	112B9742G4	1
	ll	IC2956A205C	1						IC2956A200B	2	6960053G3		
DF	ul	IC2956A200B	1	6960053G3	112B9742G1	1	JK	ul	IC2956A200B	1	6960053G3	112B9742G4	1
	ur	IC2956A200C	1						IC2956A200C	1	6960053G3		
DG	ul	IC2956A200C	1	6960053G3	112B9742G1	1	KA	ul	IC2956A200B	1	6960053G3	112B9742G3	1
	ur	IC2956A200B	1						IC2956A200C	1	6960053G3		
DH	ul, ur	IC2956A200C	2	6960053G3	112B9742G1	1	MA	ul	IC2956A200B	1	6960053G3	112B9742G5	1
	DJ	ul, ur	2						IC2956A200A	1	6960053G3		
HA	ul	IC2956A200A	2	6960053G3	112B9742G3	1	NA	ul	IC2956A200B	1	6960053G3	112B9742G6	1
	HB	ul	IC2956A200A						1	IC2956A200A	1		
HC			ul	IC2956A200B	1	6960053G3	112B9742G3	1	NE	ul	IC2956A200B	1	112B9742G7
	IC2956A200A	1		IC2956A200C	1						6960053G3		
NF	ul, ll, lr	IC2956A200C	1	6960053G3	112B9742G3	1	NF	ur	IC2956A200C	1	6960053G3	112B9742G7	1
		IC2956A200A	2						IC2956A200C	1	6960053G3		
		IC2956A200C	1						IC2956A200B	3			

\* ul, upper left; ur, upper right; ll, lower left; lr, lower right.

† Set of interlock contacts includes movable and stationary contacts, springs, and contact-holding screws for one switch unit.

‡ Requires pin Cat. 2480060. Cat. No. of interlocks does not include pin.

Fig. 5 and 6, Ref. No. 96 - ELECTRICAL INTERLOCKS (CONT'D)

Inter-lock Letter	*Location	Interlock Switch Unit Cat. No.	No. Req'd	†Interlock Contacts Set Cat. No.	δInterlock Mounting and Operating Parts		Inter-lock Letter	*Location	Interlock Switch Unit Cat. No.	No. Req'd	†Interlock Contacts Set Cat. No.	δInterlock Mounting and Operating Parts	
					Cat. No.	No. Req'd						Cat. No.	No. Req'd
NG	ul, ur	IC2956A200B	2		112B9742G7	1	PF	ul	IC2956A200C	1		112B9742G7	1
	ll, lr	IC2956A200C	2					ur, ll, lr	IC2956A200B	3			
NH	ul	IC2956A200C	1		112B9742G7	1	PG	ur	IC2956A200B	1		112B9742G7	1
	ur, ll, lr	IC2956A200A	3					ul, ll, lr	IC2956A200C	3			
NJ	ur	IC2956A200A	1		112B9742G7	1	PH	ur	IC2956A200B	1		112B9742G7	1
	ul, ll, lr	IC2956A200B	3					ul, ll, lr	IC2956A200A	3			
NK	ul	IC2956A200B	1		112B9742G7	1	PJ	ul	IC2956A200A	1		112B9742G7	1
	ur	IC2956A200A	1					ur, ll, lr	IC2956A200B	3			
NL	ll, lr	IC2956A200C	2		112B9742G7	1	PK	ul	IC2956A200A	1		112B9742G7	1
	ul, ur	IC2956A200B	2					ur	IC2956A200B	1			
NM	ll, lr	IC2956A200A	2		112B9742G7	1	PL	ll, lr	IC2956A200C	2		112B9742G7	1
	all	IC2956A200B	4					ur, ul	IC2956A200B	2			
NN	ul, ur	IC2956A200B	2		112B9742G7	1	PM	ll, lr	IC2956A200A	2		112B9742G7	1
	ll, lr	IC2956A200C	2					all	IC2956A200B	4			
NP	ul, ll	IC2956A200B	2		112B9742G7	1	PN	ul, ur	IC2956A200B	2		112B9742G7	1
	ur	IC2956A200C	1					ll, lr	IC2956A200C	2			
NR	lr	IC2956A200A	1		112B9742G7	1	PP	ul	IC2956A200C	1		112B9742G7	1
	ul	IC2956A200B	1					ur, ll	IC2956A200B	2			
NS	ur, ll	IC2956A200C	2		112B9742G7	1	PR	lr	IC2956A200A	1		112B9742G7	1
	ul, ll	IC2956A200B	2					ur	IC2956A200B	1			
NT	ur, lr	IC2956A200A	2		112B9742G7	1	PS	ul, ll	IC2956A200C	2		112B9742G7	1
	ll	IC2956A200C	1					lr	IC2956A200A	1			
NV	ur, lr	IC2956A200B	1		112B9742G7	1	PT	ul, lr	IC2956A200A	2		112B9742G7	1
	lr	IC2956A200C	1					ur, ll	IC2956A200B	2			
NW	ur	IC2956A200B	1		112B9742G7	1	PV	ur	IC2956A200C	1		112B9742G7	1
	lr	IC2956A200A	1					ll	IC2956A200C	1			
NY	ur	IC2956A200C	1		112B9742G7	-	PW	ul	IC2956A200C	1		112B9742G7	1
	ul	IC2956A200C	1					ur	IC2956A200B	1			
PE	ur	IC2956A200B	1		112B9742G7	1	PY	ur	IC2956A200A	1		112B9742G7	1
	ll, lr	IC2956A200A	2					lr	IC2956A200B	2			

IC2800-1178 CONTACTORS

\* ul, upper left; ur, upper right; ll, lower left; lr, lower right.

† Set of interlock contacts includes movable and stationary contacts, springs, and contact-holding screws for one switch unit.

‡ Requires pin Cat. 2480060. Cat. No. of interlocks does not include pin.

## COMPLETE LIST OF PARTS

Fig. No.	Ref. No.	No. Required for IC2800-1178																	Catalog Number	Description	
		AA	AB	AD	AE	AF	AG	AH	AJ	AK	AL	AM	AN	AP	AR	AS	AT	AV			AW
1	1	1	1	1	1	1	1	1	1	1	1	1	1	1	1	1	1	1	1	106B9292G1	Arc chute assembly
		1	1	1	1	1	1	1	1	1	1	1	1	1	1	1	1	1	1	4330804	Arc chute side, right-hand
		1	1	1	1	1	1	1	1	1	1	1	1	1	1	1	1	1	1	4330805	Arc chute side, left-hand
		1	1	1	1	1	1	1	1	1	1	1	1	1	1	1	1	1	1	2476427	Stud fastening arc chute sides together
		1	1	1	1	1	1	1	1	1	1	1	1	1	1	1	1	1	1	N57P21044B6	Screw fastening arc chute sides (1/4 in. -20, 2 3/4 in. pan hd. slot, pro. fin.)
1	2	1	1	1	1	1	1	1	1	1	1	1	1	1	1	1	1	1	2476452P1	Support for arc chute, right-hand	
		1	1	1	1	1	1	1	1	1	1	1	1	1	1	1	1	1	2476453P1	Support for arc chute, left-hand	
1	3	2	2	2	2	2	2	2	2	2	2	2	2	2	2	2	2	2	N22P23044B6	Bolt fastening arc chute support to base (5/16 in. -18, 2 3/4 in. hex. hd. pro. fin.)	
1	4	1	1	1	1	1	1	1	1	1	1	1	1	1	1	1	1	1	2479716P2	Arcing horn	
1	5	1	1	1	1	1	1	1	1	1	1	1	1	1	1	1	1	1	N22P23008B6	Bolt fastening arcing horn to magnet frame (5/16 in. -18, 1/2 in. hex. hd. pro. fin.)	
2	6	1	1	1	1	1	1	1	1	1	1	1	1	1	1	1	1	1	3858302P1	Armature	
2	6	-	-	-	-	-	-	-	-	-	-	-	-	-	-	-	-	-	148B6226P1	Armature	
2	6	-	-	-	-	-	-	-	-	-	-	-	-	1	1	1	1	1	171B3218P3	Armature	
		-	-	-	-	-	-	-	-	-	-	-	-	1	1	1	1	1	219A1921P3	Lever rod for armature (not shown)	
		-	-	-	-	-	-	-	-	-	-	-	-	1	1	1	1	1	N510P3824B	Mounting screw for lever rod	
2	7	2	1	2	2	2	2	2	2	2	2	2	1	2	1	-	-	1	2489864	Retaining pin, upper or lower, for Forms AA-AB-AD-AE-AF-AH-AJ-AK-AG-AL-AN-AM-AW	
2	7	-	1	-	-	-	-	-	-	-	-	-	1	-	-	-	-	-	2484383	Pin, lower	
2	8	-	-	-	-	-	-	-	-	-	-	-	-	1	1	-	-	-	205A7119P7	Retaining pin, top	
2	7	-	-	-	-	-	-	-	-	-	-	-	-	1	1	-	-	-	147A5788P5	Retaining pin, bottom	
2	8	-	-	-	-	-	-	-	-	-	-	-	-	-	-	1	-	-	205A7119P9	Retaining pin, top	
2	8	-	-	-	-	-	-	-	-	-	-	-	-	-	-	-	1	1	205A7119P11	Retaining pin, top	
2	7	-	-	-	-	-	-	-	-	-	-	-	-	-	-	-	1	1	147A5788P6	Retaining pin, bottom	
2	7	-	1	-	-	-	-	-	-	-	-	-	-	-	-	-	-	-	2484383	Retaining pin, bottom, for Forms AB-AN	
2	9	4	4	4	4	4	4	4	4	4	4	4	4	4	4	4	4	4	N503P1212B6	Cotter pin for pin (1/8 in. by 3/4 in.)	
2	10	1	1	1	1	1	1	1	1	1	1	1	1	1	1	1	1	1	3866756G2	Main movable contact tip	
2	11	1	1	1	1	1	1	1	1	1	1	1	1	1	1	1	1	1	2413371	Compression spring for main movable contact	
2	12	1	1	1	1	1	1	1	1	1	1	1	1	1	1	1	1	1	8626315G2	Fulcrum pin for main movable contact	
2	13	1	1	1	1	1	1	1	1	1	1	1	1	1	1	1	1	1	2459876	Adjusting nut for fulcrum pin	
2	14	1	1	1	1	1	1	1	1	1	1	1	1	1	1	1	1	1	2459864	Stop plate for contact tip	
2	15	1	1	1	1	1	1	1	1	1	1	1	1	1	1	1	1	1	4338327G1	Shunt for main movable contact	
2	16	2	2	2	2	2	2	2	2	2	2	2	2	2	2	2	2	2	N26P23014B6	Screw fastening shunt and stop plate to contact tip (5/16 in. -18, 7/8 in. hex. hd. slot pro. fin.)	
2	17	1	1	1	1	1	1	1	1	1	1	1	1	1	1	1	1	1	2459875	Movable contact tip, arcing	
2	18	1	1	1	1	1	1	1	1	1	1	1	1	-	-	-	-	-	5303399G1	Support for arcing movable contact	
2	19	2	2	2	2	2	2	2	2	2	2	2	2	2	2	-	2	2	N26P23018B6	Screw fastening arcing contact to support (5/16 in. -18, 1 1/8 in. hex. hd. slot pro. fin.)	
2	20	1	1	1	1	1	1	1	1	1	1	1	1	-	-	-	-	-	2413372	Compression spring for arcing contact	
2	21	1	1	1	1	1	1	1	1	1	1	1	1	1	1	1	1	1	4338327G2	Shunt for arcing contact	
2	22	1	1	1	1	1	1	1	1	1	1	1	1	1	1	-	1	1	N26P23012B6	Screw fastening shunt to support (5/16 in. -18, 3/4 in. hex. hd. slot pro. fin.)	
1, 3	23	1	1	1	1	1	1	1	1	1	1	1	1	1	1	1	1	1	2833573G1	Fulcrum support with guide plate	
		2	2	-	-	2	2	-	-	2	-	2	-	-	-	-	-	-	-	4375990G2	Pole piece for blowout coil
		-	-	1	1	-	-	1	1	-	-	-	1	-	-	-	-	-	-	2833563G1	Laminated pole piece for blowout coil, right-hand
3	27	-	-	1	1	-	-	1	1	-	-	-	1	-	-	-	-	-	2833563G2	Laminated pole piece for blowout coil, left-hand	
		1	1	1	1	1	1	1	1	1	1	1	1	-	-	-	-	-	-	2459443	Magnet core for blowout coil



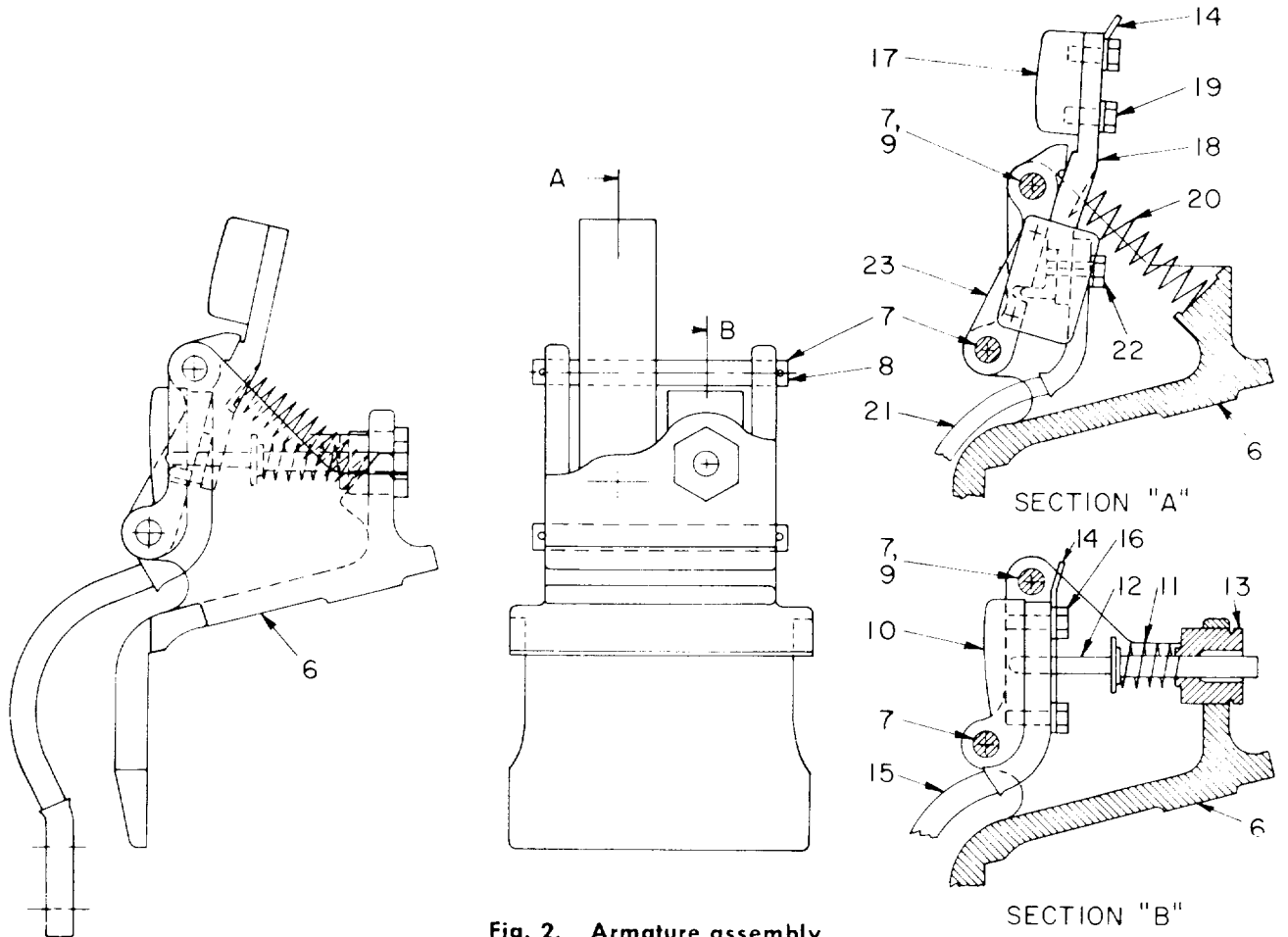


Fig. 2. Armature assembly

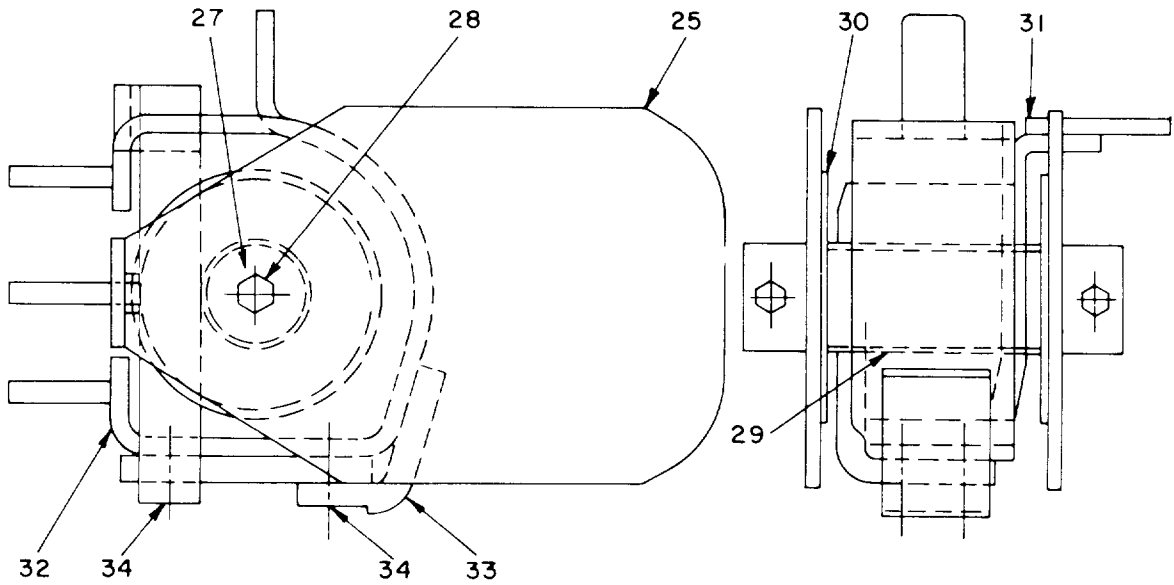


Fig. 3. Blowout coil and stationary contact

## COMPLETE LIST OF PARTS (CONT'D)

Fig. No.	Ref. No.	No. Required for IC2800-1178																Catalog Number	Description		
		AA	AB	AD	AE	AF	AG	AH	AJ	AK	AL	AM	AN	AP	AR	AS	AT			AV	AW
3	28	2	2	-	-	2	2	-	-	2	-	2	-	-	-	-	-	-	-	N22P25012B6	Screw fastening pole piece to core (3/8 in. -16, 3/4 in. hex. hd. pro. fin.)
3	29	1	1	-	-	-	1	-	-	1	-	1	-	-	-	-	-	-	-	N22P21032B6 2459442	Screw (1/4 in. -20, 2 in. hex. hd., pro. fin.) Insulation tube for magnet core
3	30	2	2	-	-	-	2	-	-	2	-	2	-	-	-	-	-	-	-	2459442P2 205A4036P1	Insulation tube for magnet core Insulation tube for magnet core
3	31	1	1	1	1	1	1	1	1	1	-	1	-	-	-	-	-	-	-	287A103P1 287A103P4 125A6760P3	Insulation flange for blowout coil Insulation flange for blowout coil Insulation flange for blowout coil
3	32	1	1	1	1	1	1	1	1	1	-	1	-	-	-	-	-	-	-	106B9291G1 287A103P2	Blowout coil Insulation between turns of blowout coil
3	33	1	1	1	1	-	-	1	1	1	-	1	1	-	-	-	-	-	-	287A103P7 287A103P6	Insulation between turns of blowout coil Insulation between turns of blowout coil
3	34	1	1	1	1	1	1	1	1	1	-	1	-	-	-	-	-	-	-	3865674G1 2458470	Support for stationary contact and blowout coil Stationary arcing tip
1	35	1	1	1	1	1	1	1	1	-	1	1	1	1	1	1	1	1	1	N22P23014B6	Screw fastening stationary contact or blowout coil to support (5/16 in. -18, 7/8 in. hex. hd. pro. fin.)
1	36	Δ	Δ	Δ	Δ	Δ	Δ	Δ	Δ	Δ	Δ	Δ	Δ	Δ	Δ	Δ	Δ	Δ	Δ	168A2691G1 4327089G1	Upper connection block Contact support and bus bar
1	37	4	4	4	4	4	4	4	4	4	4	4	4	4	4	4	4	4	4	9034388G1	Contact block
1	40	1	1	1	1	1	1	1	1	-	1	1	-	-	-	-	-	-	-	N22P25028B6	Screw fastening contact block to support (3/8 in. -16, 1 7/8 in. hex. hd. pro. fin.)
1	42	1	1	1	1	1	1	1	1	-	1	1	-	-	-	-	-	-	-	5356723P1	Shim for upper connection block
1	43	1	1	1	1	1	1	1	1	1	1	1	1	1	1	1	1	1	1	194A1872G1	Spacer for upper or lower connection block and upper bus assembly
1	44	1	1	1	1	1	1	1	1	1	1	1	1	1	1	1	1	1	1	129B8774P2	Connection bar
1	45	4	4	4	4	4	4	4	4	4	4	4	4	4	4	4	4	4	4	174A4711P1	Supporting bracket
1	46	1	1	1	1	1	1	1	1	1	1	1	1	1	1	1	1	1	1	N22P25020B6	Bolt fastening supporting bracket to connection bar (3/8 in. -16, 1 1/8 in. hex. hd. pro. fin.)
1	47	1	1	1	1	1	1	1	1	1	1	1	1	1	1	1	1	1	1	N22P23040B6	Screw fastening supporting bracket to base (3/8 in. -16, 1 1/8 in. hex. hd. pro. fin.)
1	48	2	2	2	2	2	2	2	2	2	2	2	2	2	2	2	2	2	2	6958533P3	Pad between magnet frame and base
1	49	2	2	2	2	-	-	2	2	-	-	-	-	-	-	-	-	-	-	2479717P1	Connection strip between magnet frame and lower connection block
4	51	1	1	1	1	1	1	1	1	1	1	1	-	-	-	-	-	-	-	4327089G1	Lower connection block
4	52	1	-	1	1	-	-	1	1	1	1	1	-	-	-	-	-	-	-	N22P25024B6	Bolt fastening shunt to lower connection block (5/16 in. -18, 3/4 in. hex. hd. pro. fin.)
4	52A	1	-	1	1	-	-	1	1	1	1	1	-	-	-	-	-	-	-	N22P25020B6	Bolt fastening spacers to connection block (5/16 in. -18, 1 1/8 in. hex. hd. pro. fin.)
4	53	2	2	2	2	-	-	2	2	-	-	-	-	-	-	-	-	-	-	282A113P80	Bolt fastening connection block to base (1/2 in. -13, 3 3/4 in. hex. hd. pro. fin.)
4	54	2	2	2	2	-	-	2	2	-	-	-	-	-	-	-	-	-	-	4370438P1	Plate
4	55	2	2	2	2	-	-	2	2	-	-	-	-	-	-	-	-	-	-	219A1920P2	Upper support post for plate
																				205A8990P1	Upper support post for plate
																				205A8990P2	Upper support post for plate
																				2479720	Lower support post for plate
																				4902724	Bracket for armature spring
																				N22P29020B6	Bolt fastening lower post to plate (1/2 in. -13, 1 1/4 in. hex. hd. pro. fin.)

Δ Quantity variable

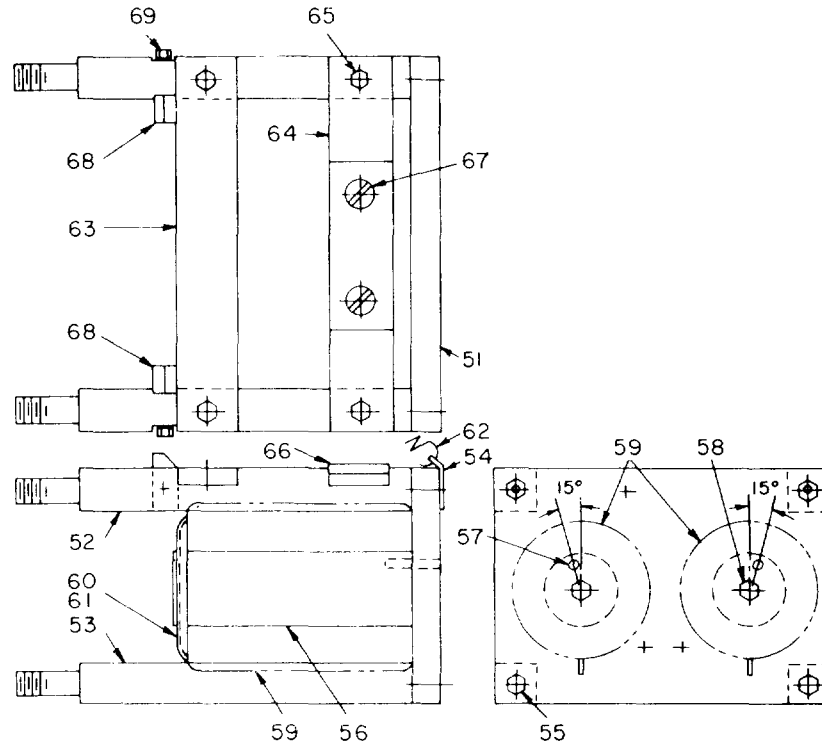


Fig. 4. Magnet frame and coil

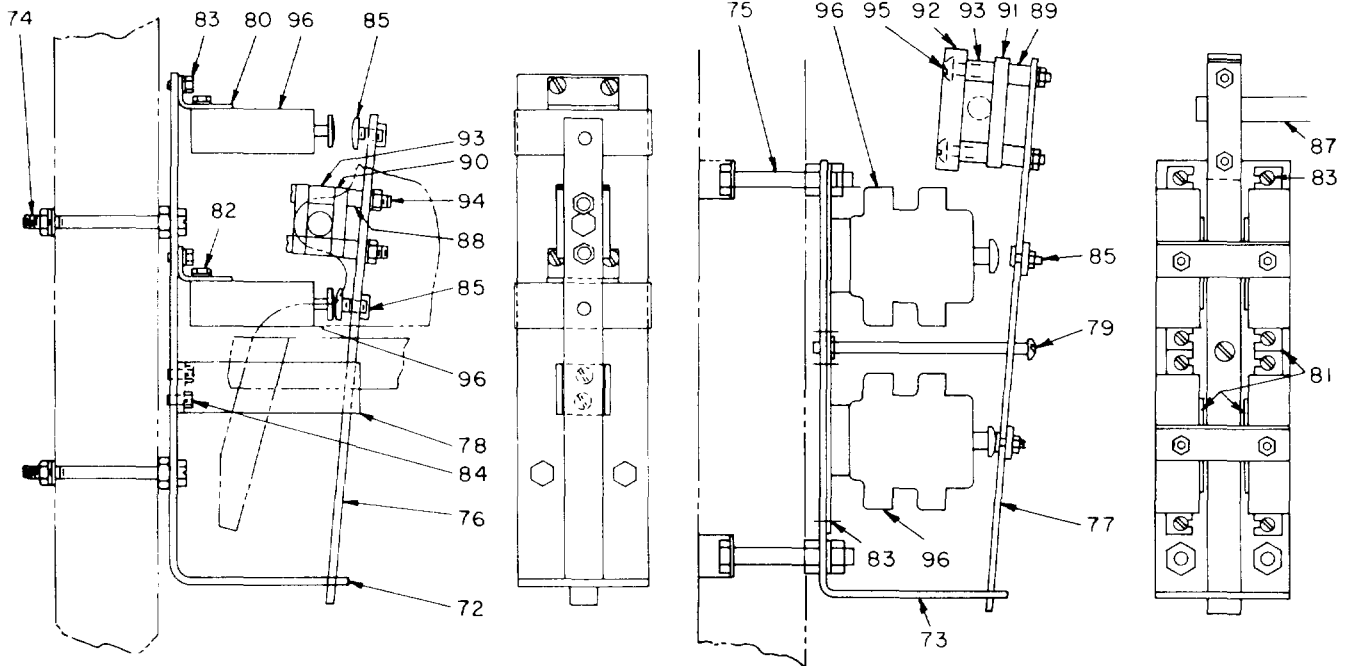


Fig. 5. Mounting parts for interlocks, letters B, C, D, or BB

Fig. 6. Mounting parts for interlocks, except B, C, D, or BB

## COMPLETE LIST OF PARTS (CONT'D)

Fig. No.	Ref. No.	No. Required for IC2800-1178																	Catalog Number	Description	
		AA	AB	AD	AE	AF	AG	AH	AJ	AK	AL	AM	AN	AP	AR	AS	AT	AV			AW
4	56	2	2	2	2	-	2	2	2	2	2	2	2	-	-	-	-	-	2	8072651G1	Magnet core
4	57	2	2	2	2	-	2	2	2	2	2	2	2	-	-	-	-	-	2	N509P1920	Dowel pin for magnet core
4	58	2	2	2	2	-	2	2	2	2	2	2	2	-	-	-	-	-	2	N22P29024B6	Bolt fastening magnet core to plate (1/2 in. -13, 1 1/2 in. hex. hd. pro. fin.)
1,4	59	2	2	2	2	2	2	2	2	2	2	2	2	2	2	2	2	2	2	See table	Operating coil
4	60	2	2	2	2	-	2	2	2	2	2	2	2	2	2	2	2	2	2	147A5848P6	Spacer for coil
4	60	-	-	-	-	2	-	-	-	-	-	-	-	-	-	-	-	-	-	147A5848P10	Spacer for coil
4	61	2	2	2	2	-	2	2	2	2	2	2	2	-	-	-	-	-	2	8626009P10	Spring washer for coil
4	62	-	2	-	-	-	-	-	-	-	-	-	2	-	-	-	-	-	-	2413382	Tension spring for armature
4	63	1	1	1	1	-	1	1	1	1	1	1	1	-	-	-	-	-	1	2459872	Fulcrum bar for armature
4	64	1	1	1	1	-	1	1	1	1	1	1	1	-	-	-	-	-	1	2459873	Stop bar for armature
4	65	4	4	4	4	-	4	4	4	4	4	4	4	-	-	-	-	-	4	N22P25016B6	Screw fastening fulcrum or stop bar to post (3/8 in. -16, 1 in. hex. hd. pro. fin.)
4	66	1	1	1	1	-	1	1	1	1	1	1	1	1	1	1	1	1	1	2459874	Stop plate for stop bar
		-	-	-	-	1	-	-	-	-	-	-	-	-	-	-	-	-	-	2459874P2	Stop plate for stop bar
4	67	2	2	2	2	-	2	2	2	2	2	2	2	-	-	-	-	-	2	N51P16008B6	Screw fastening stop plate to stop bar (10-32, 1/2 in. fl. hd. pro. fin.)
4	68	2	2	2	2	-	2	2	2	2	2	2	2	-	-	-	-	-	2	2459871	Guide for armature
4	69	2	2	2	2	-	2	2	2	2	2	2	2	-	-	-	-	-	2	N26P21016B6	Screw fastening armature guide to fulcrum (1/4 in. -20, 1 1/4 in. hex. hd. slot pro. fin.)