

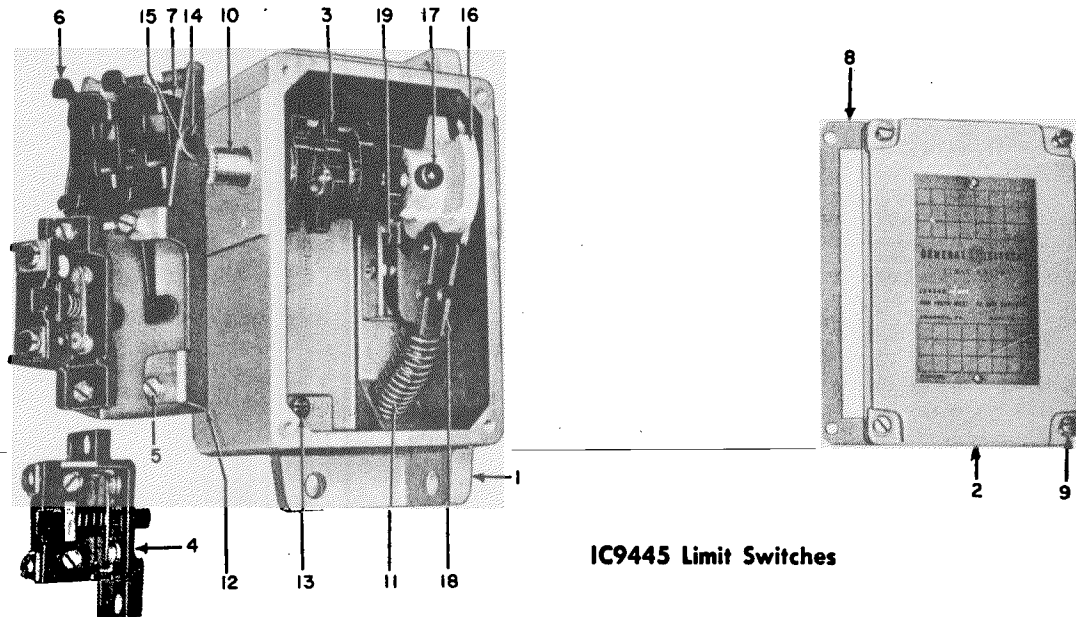


# RENEWAL PARTS

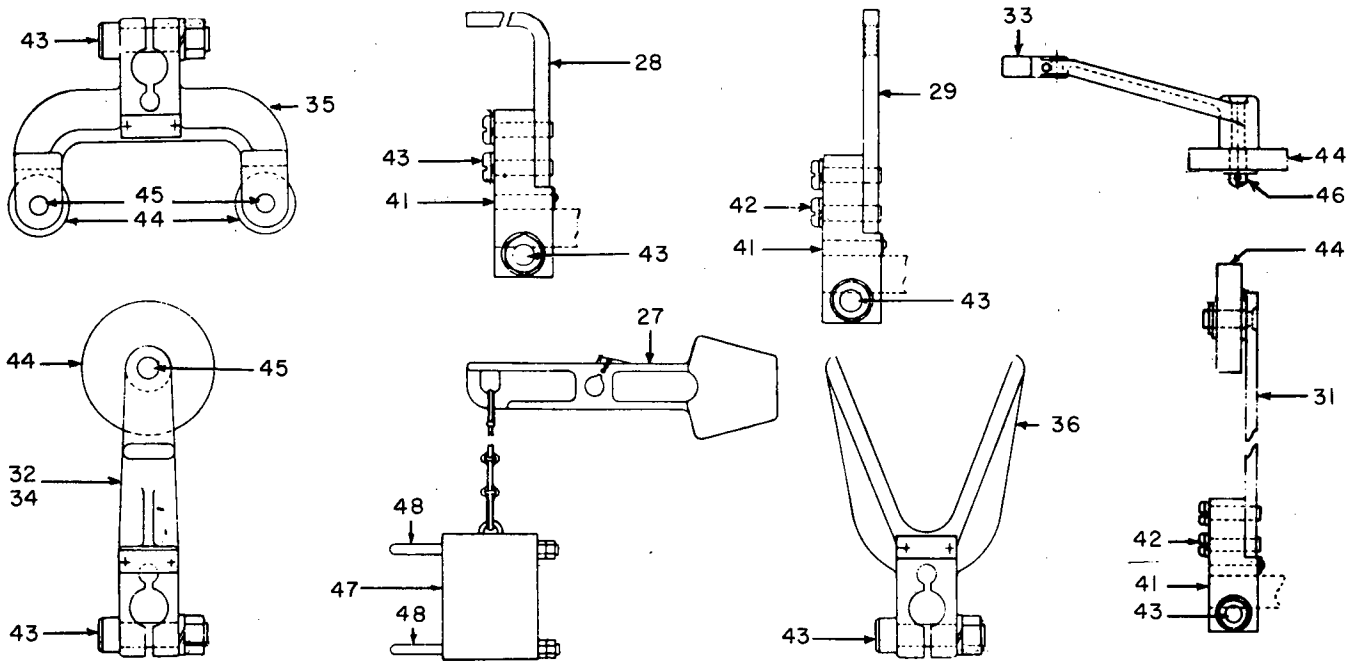
GEF-4183C  
Supersedes GEF-4183B

## IC9445-A200, -A400, -B200, AND -B400 LIMIT SWITCHES

**NOTE:**—When ordering parts for a form of the switch not covered by this bulletin, give reference number, description of part, complete nameplate reading, and above bulletin (GEF) number. *Do not use catalog number when form for which the parts are needed is not covered by the bulletin.*



IC9445 Limit Switches



IC9445Y Operating Levers

**NOTE:** - Parts recommended for normal stock are Ref. No. 4 contact unit (see page 2) and Ref. No. 11, spring for pawl (see page 3).

When ordering renewal parts, give quantity, catalog number, description of each item required, and complete nameplate reading.

# GENERAL ELECTRIC

Ref. No.	Number Required for IC9445-																				Catalog Number	Description				
	B200										B400															
	A	B	C	D	J	K	L	M	N	P	R	AA	AB	AC	AD	AE	AF	AN	AP	AR			AS	AT	AV	AW
1	1	1	1	1	1	1	1	1	1	1	-	-	-	-	-	-	-	-	-	-	-	-	-	-	119A4426G2	Box assembly
1	-	-	-	-	-	-	-	-	-	-	1	1	1	1	1	1	1	1	1	1	1	1	1	1	119A4426G4	Box assembly
2	1	1	1	1	1	1	1	1	1	1	-	-	-	-	-	-	-	-	-	-	-	-	-	-	501D122P2	Cover for box
2	-	-	-	-	-	-	-	-	-	-	1	1	1	1	1	1	1	1	1	1	1	1	1	1	501D124P2	Cover for box
3	1	2	-	-	-	-	2	2	1	-	-	3	3	-	-	-	-	-	1	2	-	-	3	4	477C381P1	Operating cam
3	-	-	2	-	-	-	-	-	-	2	-	-	3	4	-	-	-	-	-	-	-	2	-	-	477C310P3	Operating cam
3	-	-	-	2	1	2	-	-	-	2	-	-	-	-	3	4	3	3	3	-	-	-	-	-	477C310P6	Operating cam
4	1	2	2	2	-	-	2	-	-	2	1	3	4	3	4	3	4	-	-	2	-	-	-	-	721B773G1	Contact unit
4	-	-	-	-	1	2	-	-	1	-	-	-	-	-	-	-	3	4	4	-	2	3	4	-	IC2956A206A	Contact unit
*4	-	-	-	-	-	-	1	-	-	-	-	-	-	-	-	-	-	-	-	-	-	-	-	-	721B773G7	Contact unit
5	2	4	4	4	-	-	-	-	4	2	6	8	6	8	6	8	-	-	-	-	-	-	-	-	576A145P4	Screw for contact unit
6	1	2	2	2	1	2	2	2	1	2	1	3	4	3	4	3	4	3	4	4	4	2	3	4	119A4423P1	Cam follower
7	1	2	2	2	1	2	2	2	1	2	1	2	4	3	4	3	4	3	4	4	4	2	3	4	144A4834P1	Bearing support
8	1	-	-	-	1	-	-	-	1	-	1	1	1	-	1	-	1	-	-	-	-	1	-	-	577A129P5	Spacer for cam follower
8	1	1	1	1	1	1	1	1	1	1	-	-	-	-	-	-	-	-	-	-	-	-	-	-	119A4427P3	Gasket (1/4 in. thick) for cover
8	-	-	-	-	-	-	-	-	-	-	1	1	1	1	1	1	1	1	1	1	1	1	1	1	117A7808P2	Gasket (1/4 in. thick) for cover
9	4	4	4	4	4	4	4	4	4	4	4	4	4	4	4	4	4	4	4	4	4	4	4	4	N91P16014	Screw for cover (10-32, 7/8 in., rd hd)
	4	4	4	4	4	4	4	4	4	4	4	-	-	-	-	-	-	-	-	-	-	-	-	-	577A386P2	Retaining ring for screw
	-	-	-	-	-	-	-	-	-	-	4	4	4	4	4	4	4	4	4	4	4	4	4	4	577A122P2	Retaining ring for screw
	1	1	1	1	1	1	1	1	1	1	1	1	1	1	1	1	1	1	1	1	1	1	1	1	117A7872P2	Bearing plate for shaft
	1	1	1	1	1	1	1	1	1	1	1	1	1	1	1	1	1	1	1	1	1	1	1	1	119A4427P4	Gasket for bearing plate
	2	2	2	2	2	2	2	2	2	2	2	2	2	2	2	2	2	2	2	2	2	2	2	2	N57P16008B6	Screw for bearing plate (10-32, 1/2 in., pan hd, pro fin)
	1	1	1	1	1	1	1	1	1	1	1	1	1	1	1	1	1	1	1	1	1	1	1	1	577A135P1	Oil seal for shaft
	1	1	1	1	1	1	1	1	1	1	1	1	1	1	1	1	1	1	1	1	1	1	1	1	117A7872P1	Cover for oil seal
	1	1	1	1	1	1	1	1	1	1	1	1	1	1	1	1	1	1	1	1	1	1	1	1	119A4427P4	Gasket for oil seal cover
	2	2	2	2	2	2	2	2	2	2	2	-	-	-	-	-	-	-	-	-	-	-	-	-	N170P16008	Screw for oil seal cover (10-32, 1/2 in., socket hd)
	-	-	-	-	-	-	-	-	-	-	2	2	2	2	2	2	2	2	2	2	2	2	2	2	N57P16008B6	Screw for oil seal cover (10-32, 1/2 in., pan hd, pro fin)
10	1	1	1	1	1	1	1	1	1	1	-	-	-	-	-	-	-	-	-	-	-	-	-	-	144A4871P2	Shaft
10	-	-	-	-	-	-	-	-	-	-	1	1	1	1	1	1	1	1	1	1	1	1	1	1	144A4875P2	Shaft
*11	1	1	1	1	1	1	1	1	1	1	1	1	1	1	1	1	1	1	1	1	1	1	1	1	117A7804	Spring for pawl
12	1	1	1	1	1	1	1	1	1	1	-	-	-	-	-	-	-	-	-	-	-	-	-	-	118B7360P1	Support for contact unit
12	-	-	-	-	-	-	-	-	-	-	2	2	2	2	2	2	2	2	2	2	2	2	2	2	118B7360P2	Support for contact unit
13	2	2	2	2	2	2	2	2	2	2	2	4	4	4	4	4	4	4	4	4	4	4	4	4	N112P16006B	Screw for support (10-32, 3/8 in., pan hd, thd cut)
14	1	1	1	1	1	1	1	1	1	1	-	-	-	-	-	-	-	-	-	-	-	-	-	-	577A127P18	Bearing pin
14	-	-	-	-	-	-	-	-	-	-	1	1	1	1	1	1	1	1	1	1	1	1	1	1	577A127P19	Bearing pin
15	2	2	2	2	2	2	2	2	2	2	2	2	2	2	2	2	2	2	2	2	2	2	2	2	N910P31	Retaining ring
16	1	1	1	1	1	1	1	1	1	1	1	1	1	1	1	1	1	1	1	1	1	1	1	1	129B5749P1	Star wheel
17	1	1	1	1	1	1	1	1	1	1	1	1	1	1	1	1	1	1	1	1	1	1	1	1	N170P23012B	Screw for star wheel (5/16-18, 3/4 in., socket hd)
18	1	1	1	1	1	1	1	1	1	1	1	1	1	1	1	1	1	1	1	1	1	1	1	1	125A4239G2	Pawl assembly
19	2	2	2	2	2	2	2	2	2	2	2	2	2	2	2	2	2	2	2	2	2	2	2	2	N112P16006B	Screw for pawl (10-32, 3/8 in., pan hd, thd cut)

\* Recommended for normal stock

OPERATING LEVERS (CONT'D)

Ref. No.	Number Required for IC9445Y-																			Catalog Number	Description						
	126	127	128	129	130	131	132	133	134	135	136	137	138	139	140	141	142	143	144			145	146	147	148	149	
37	1	1																		1						177C916P20	Operating arm
† 38			1																							119B1392P2	Operating arm
31				1																						117A7917P4	Operating arm
† 39					1																					181A5606P1	Operating arm
27						1																				106B7033P2	Operating arm
32							1																			118B8806P4	Operating arm
26								1																1		177C916P1	Operating arm
27									1	1																106B7033P1	Operating arm
25											1			1												177C916P25	Operating arm
31													1													151A7637G5	Operating arm
29															1											117A7917P5	Operating arm
31																1										117C7917P6	Operating arm
25																	1									177C916P26	Operating arm
25																		1								177C916P27	Operating arm
31																				1						177C917P3	Operating arm
† 40																					1					171B3078G1	Operating arm
29																						1				117A7917P7	Operating arm
32																								1		118B8806P1	Operating arm
41				1	1								1			1										125A4261P1	Hub for arm
42				2	2							2				2										N57P21016B	Screw fastening arm to hub (1/4-20, 1 in., pan hd, pro fin)
43	1	1	1	1	1			1			1		1	1	1	1	1	1	1	1	1	1				N29P25028B	Screw fastening operating lever to switch (3/8-16, 1 3/4 in., socket hd, pro fin)
43							1																1			N29P25032B	Screw fastening operating lever to switch (3/8-16, 2 in., socket hd, pro fin)
44	1										1															574A610P3	Roller
44								2																2		574A610P5	Roller
44																							1			2215866	Roller
44							1																			574A610P7	Roller
44												1					1									117A7920P1	Roller
44		1		1									1						1							117A7920G1	Roller
44														1												117A7918G2	Roller
44																				1						574A610P8	Roller
44																						1				574A610P7	Roller
45	1	1		1									1	1		1	1				1		1			N533P3820	Pin for roller
46							1																			2215218P3	Post
46																								1		2215218P4	Post
47																										1970369G7	Weight for operating arm
48						2																				1974597P2	Guide hook for weight

† Not shown.

OPERATING LEVERS

Ref No.	Number Required for IC9445Y-																				Catalog Number	Description				
	100	101	102	103	105	106	107	108	110	111	112	113	114	115	116	117	118	119	120	121			122	123	124	125
25	1			1	1																				177C916P2	Operating arm
26		1																							177C916P1	Operating arm
27			1																						106B7033P1	Operating arm
28											1														117A7917P1	Operating arm
29										1															117A7917P2	Operating arm
30										1															177C916P4	Operating arm
31											1														177C917P3	Operating arm
32												1	1	1	1										177C916P8	Operating arm
33																1									118B8806P1	Operating arm
34																	1	1		1	1				177C916P18	Operating arm
35																			1						177C916P21	Operating arm
36																						1			177C916P23	Operating arm
37																							1	1	177C916P20	Operating arm
41								1	1		1														125A4261P1	Hub for arm
42								2	2		2														N57P21016B	Screw fastening hub to arm (1/4-20, 1 in., pan hd, pro fin)
43	1	1	1	1	1	1	1	1	1	1	1	1	1	1	1	1	1	1	1	1	1	1	1	1	N29P25028B	Screw fastening operating lever to switch (3/8-16, 1 3/4 in., socket hd, pro fin)
43													1												N29P25032B	Screw fastening operating lever to switch (3/8-16, 2 in., socket hd, pro fin)
44		1	2										1					1	2						574A610P3	Roller
44																									2215866	Roller
44																1									162A2374G1	Roller
44	1										1						1						1		117A7919P1	Roller
44				1								1											1		117A7920P1	Roller
44					1						1				1										117A7918G1	Roller
45	1	1	2	1	1					1	1		1	1	1		1	1	2	1	1		1	1	N533P3820	Pin for roller
46																									2215218P3	Post
47																1									1970369G4	Weight for operating arm
48						1																			1974597P2	Guide hook for weight

IC9445-A200, -A400, -B200, AND -B400 LIMH LIMIT SWITCHES

Ref. No.	Number Required for IC9445-																					Catalog Number	Description			
	A200											A400														
	A	B	C	D	J	K	L	M	N	P	R	AA	AB	AC	AD	AE	AF	AN	AP	AR	AS			AT	AV	AW
1	1	1	1	1	1	1	1	1	1	1	-	-	-	-	-	-	-	-	-	-	-	-	-	-	119A4426G1	Box assembly
1	-	-	-	-	-	-	-	-	-	-	1	1	1	1	1	1	1	1	1	1	1	1	1	1	119A4426G3	Box assembly
2	1	1	1	1	1	1	1	1	1	1	-	-	-	-	-	-	-	-	-	-	-	-	-	-	501D122P2	Cover for box
2	-	-	-	-	-	-	-	-	-	-	-	-	-	-	-	-	-	-	-	-	-	-	-	-	501D124P2	Cover for box
3	1	2	-	-	-	-	2	2	1	-	3	3	-	-	-	-	-	-	1	2	-	3	4	-	477C381P1	Operating cam
3	-	-	2	-	-	-	-	-	-	2	-	-	3	4	-	-	-	-	-	-	-	2	-	-	477C310P3	Operating cam
3	-	-	-	2	1	2	-	-	-	2	-	-	-	-	3	4	3	3	3	-	-	-	-	-	477C310P6	Operating cam
*4	1	2	2	2	-	-	-	-	2	1	3	4	3	4	3	4	-	-	2	-	-	-	-	-	721B773G1	Contact unit
*4	-	-	-	-	1	2	-	-	1	-	-	-	-	-	-	-	3	4	4	-	2	3	4	-	IC2956A206A	Contact unit
*4	-	-	-	-	-	-	2	-	-	-	-	-	-	-	-	-	-	-	-	-	-	-	-	-	721B773G3	Contact unit
*4	-	-	-	-	-	-	-	1	-	-	-	-	-	-	-	-	-	-	-	-	-	-	-	-	721B773G7	Contact unit
5	2	4	4	4	-	-	-	-	4	2	6	8	6	8	6	8	-	-	-	-	-	-	-	-	576A145P4	Screw for contact unit
6	1	2	2	2	1	2	2	2	1	2	1	3	4	3	4	3	4	3	4	4	2	2	3	4	119A4423P1	Cam follower
7	1	2	2	2	1	2	2	2	1	2	1	3	4	3	4	3	4	3	4	4	2	2	3	4	144A4834P1	Bearing support
	1	-	-	-	1	-	-	-	1	-	1	-	1	-	1	-	1	-	-	-	-	1	-	-	577A129P5	Spacer for cam follower
8	1	1	1	1	1	1	1	1	1	1	1	-	-	-	-	-	-	-	-	-	-	-	-	-	119A4427P1	Gasket (3/16 in. thick) for cover
8	-	-	-	-	-	-	-	-	-	-	1	1	1	1	1	1	1	1	1	1	1	1	1	1	117A7808P1	Gasket (3/16 in. thick) for cover
9	4	4	4	4	4	4	4	4	4	4	4	4	4	4	4	4	4	4	4	4	4	4	4	4	N57P16014B6	Screw for cover (10-32, 7/8 in., pan hd, pro fin)
	4	4	4	4	4	4	4	4	4	4	-	-	-	-	-	-	-	-	-	-	-	-	-	-	577A386P2	Retaining ring for screw
	-	-	-	-	-	-	-	-	-	-	4	4	4	4	4	4	4	4	4	4	4	4	4	4	577A122P2	Retaining ring for screw
10	1	1	1	1	1	1	1	1	1	1	1	1	1	1	1	1	1	1	1	1	1	1	1	1	144A4871P1	Shaft
10	-	-	-	-	-	-	-	-	-	-	1	1	1	1	1	1	1	1	1	1	1	1	1	1	144A1875P1	Shaft
*11	1	1	1	1	1	1	1	1	1	1	1	1	1	1	1	1	1	1	1	1	1	1	1	1	117A7804	Spring for pawl
12	1	1	1	1	1	1	1	1	1	1	1	-	-	-	-	-	-	-	-	-	-	-	-	-	118B7360P1	Support for contact unit
12	-	-	-	-	-	-	-	-	-	-	2	2	2	2	2	2	2	2	2	2	2	2	2	2	118B7360P2	Support for contact unit
13	2	2	2	2	2	2	2	2	2	2	4	4	4	4	4	4	4	4	4	4	4	4	4	4	N112P16006B6	Screw for support (10-32, 3/8 in., pan hd, thd cut)
14	1	1	1	1	1	1	1	1	1	1	-	-	-	-	-	-	-	-	-	-	-	-	-	-	577A127P18	Bearing pin
14	-	-	-	-	-	-	-	-	-	-	1	1	1	1	1	1	1	1	1	1	1	1	1	1	577A127P19	Bearing pin
15	2	2	2	2	2	2	2	2	2	2	2	2	2	2	2	2	2	2	2	2	2	2	2	2	N910P31	Retaining ring
16	1	1	1	1	1	1	1	1	1	1	1	1	1	1	1	1	1	1	1	1	1	1	1	1	129B5749P1	Star wheel
17	1	1	1	1	1	1	1	1	1	1	1	1	1	1	1	1	1	1	1	1	1	1	1	1	N170P23012B6	Screw for star wheel (5/16-18, 3/4 in., socket hd)
18	1	1	1	1	1	1	1	1	1	1	1	1	1	1	1	1	1	1	1	1	1	1	1	1	125A4239G2	Pawl assembly
19	2	2	2	2	2	2	2	2	2	2	2	2	2	2	2	2	2	2	2	2	2	2	2	2	N112P16006B6	Screw for pawl (10-32, 3/8 in., pan hd, thd cut)

\* Recommended for normal stock

IC9445-A200, -A400, -B200, AND -B400 LIMH LIMIT SWITCHES

**GENERAL ELECTRIC COMPANY  
COMPONENT AND DEVICES SALES  
DRIVE SYSTEMS DEPARTMENT  
SALEM, VA 24153**

**GENERAL  ELECTRIC**