

Specification Form GED-3933 has been designed for data-processing equipment and also to make it easier to fill out. Refer to page 64 and proceed as follows to fill out the form

1 FOR FACTORY USE ONLY (BLOCKS 9 THROUGH 18)

These blocks are for factory use only, and should be left blank.

2 CATALOG NUMBER (BLOCKS 19 THROUGH 25)

This number is assigned at the factory and these blocks should be left blank.

3 ACTION

This part of the form is broken into five sections, detailed under the five following points (4-8).

4 MAINTAINED ALL POSITIONS (BLOCK 26)

Put an "X" in this block if all the positions are maintained, and put in a dash (-) if they are not maintained.

5 SPRING RETURN FROM COUNTER-CLOCKWISE POSITIONS (BLOCKS 27 AND 28)

Put the number of the position the spring return action is *from* in Block 27 and the position the spring return is *to* in Block 28. Put in a dash when this action does not apply.

6 SPRING RETURN FROM CLOCKWISE POSITIONS (BLOCKS 29 AND 30)

Put the number of the position the spring return action is *from* in Block 29 and the position the spring return is *to* in Block 30. Put in a dash when this action does not apply.

7 MAINTAINED POSITION WITH SPRING RETURN (BLOCKS 31 THROUGH 34)

When you have the combination of maintained spring return action, the maintained positions are put in these blocks, starting with Block 31 and the lowest position number. Put a dash in the blocks that remain.

NOTE: With maintained and spring-return action, if Position 3 is being used, Position 3 is always a maintained position.

8 PULL-TO-LOCK (BLOCKS 35 AND 36)

When Pull-to-Lock is desired, the positions in which the handle is to be pulled and locked are indicated in these blocks. A dash is indicated in both blocks when Pull-to-Lock is *not* desired.

9 HANDLES (BLOCK 37)

Select the proper code letter (K, V, P, L

or N) to identify the type of handle desired. Indicate the appropriate letter in this block. The code letters A, B, C & D are used when a matching Type SB-1 handle is requested.

NOTE: For removable-type-handle switches, the code "N" for none is used, since removable handles are furnished as a separate item and are not furnished with the switch. See "Removable- Handles" Section.

10 ESCUTCHEONS (BLOCK 38)

Select the proper code letter (S, T, N, P or R) for the desired escutcheon, and put it in this block. When a keyed escutcheon is required for a removable handle, use the letter "R" and refer to Point 11, "Escutcheon Keyways". It should be noted that code "P" is a special escutcheon. This code is used when Lamicoid escutcheons are required. The description "Lamicoid" must also be specified in "Special Instructions" on the form as described in Point 17.

11 ESCUTCHEON KEYWAYS (BLOCKS 39 THROUGH 43)

These blocks are used only when a keyed escutcheon (Code R) is specified. Three keyways are normally used, and information in these blocks is generally assigned at the factory. See "Removable Handles" Section.

12 INTERMEDIATE POSITIONS (BLOCKS 44 THROUGH 51)

The SBM switch has eight position locations, with 45 degrees between positions. When 90 degree positioning is required, the 45-degree position location becomes an intermediate (non-feel) position. An "X" in one of the eight blocks above the positions indicates this position to be an intermediate position. See the section on "Overlapping (make-before-break) Contacts".

13 OPERATING REQUIREMENT

See the Table - The vertical numbers 1 to 20 are the contact numbers. The horizontal numbers, 1 through 8, are the position locations.

Put an "X" in the block under the position in which you want that contact to close. If that contact is to be open, leave the block blank. To the right of the table is a sketch of the standard escutcheon to aid in identifying the position locations on the switch.

When slip contacts are required, use the table on the right showing Position locations 1 through 5 only (as indicated). Under Position 3, there are two columns (2 and 4) to show if a contact is to be closed in Position 3 only when coming

from Position 2 or when coming from Position 4. Whatever contact action occurs in only Position 3 from 2 will also occur in Position 2 and 1 (when used), and whatever contact action occurs in only 3 from 4 will also occur in Position 4 and 5 (when used). Refer to "Slip Limitations" and how to overcome them before completing this part of the form. If a contact is not a slip contact and needs to close in Position 3, put an "X" in both columns under Position 3.

14 STOP LOCATIONS

At the bottom of the switch operating tables are Blocks number 1 through 8 and 1 through 6 which identify the stop locations. The stop locations are under the vertical lines between the positions.

Example: When using Positions 2, 3 and 4, circle stop location Number 2 to show that the handle is not to go to Position 1 from Position 2, and circle stop location Number 5 to show that the handle is not to go to Position 5 from Position 4. For 360 degree rotation, *do not* circle any stops.

15 CIRCUIT DESIGNATION ENGRAVING:

Specify the circuit designation desired in the 22 blocks following the blocks marked 108. A maximum of 22 characters can be specified.

16 ESCUTCHEON ENGRAVING

There are two lines of engraving available for each position (1 through 8), and a maximum of eight characters per line. If only one line is required, use the *top line*.

If a Position is to be blank, write ("BLANK") for that Position. When a target escutcheon is specified, leave Position 3 blank.

If the entire escutcheon is to be blank write "BLANK ESCUTCHEON" under "Special Instructions" (Point 17) at the bottom of the form.

17 SPECIAL INSTRUCTIONS

There are four rows of blocks to be used for any special instructions, such as the handle painted red, Lamicoid escutcheon for thick panel, blank escutcheon, jumpers, etc.

There are two types of Jumpers available for the SBM switch: Jumper 307V515 for contacts on the same stage, and Jumper 307V512 for jumpering contacts on adjacent stages.

NOTE: Jumpers are only furnished assembled, where required, on all standard listed switches. For unlisted switches, separate jumpers can be ordered.

Examples of Filled-Out Forms on Pages 57 & 58



This form may be photocopied for your convenience

SBM

"SPECIFICATION FORM" · GED-3933

(6-8) 1 0 4

1 STAGES 2 STOPS 3 PNL. THK. 4 SLIPS 5 SHAFT POS. 6 JMPRS. 7 R & I

FOR FACTORY USE ONLY

2 CATALOG NO.

4 5 6 7 8 9 10 11

26 FROM POS. 27 TO 28 FROM POS. 29 TO 30 31 32 33 34 35 36 37

3 ACTION (YES=X NO=-) ALL POSITIONS MAINTAINED

S.R. FROM C.C.W. POSITIONS SPRING RETURN

S.R. FROM C.W. POSITIONS

MAINT. POS. WITH SPR. RET.

PULL TO LOCK

KNURLED = K A B C D
OVAL = V
PISTOL GRIP = P
LEVER = L
ROUND = R
NONE = N

TO MATCH SB-1

STANDARD = S
TARGET = T
NONE = N
(SPECIAL) = P
KEYED (FOR REM. HDL.) = R

ESCUTCHEON KEYWAYS

12 SBM SWITCH OPERATING REQUIREMENT TABLE

CONTACTS	MARK		INTERMEDIATE		POS.	
	ODD	EVEN	8	7	6	5
1						
2						
3						
4						
5						
6						
7						
8						
9						
10						
11						
12						
13						
14						
15						
16						
17						
18						
19						
20						

13

14

15

16

17

18

19

20

21

22

23

24

25

26

27

28

29

30

31

32

33

34

35

36

37

38

39

40

41

42

43

44

45

46

47

48

49

50

51

52

53

54

55

56

57

58

59

60

61

62

63

64

65

66

67

68

69

70

71

72

73

74

75

76

77

78

79

80

81

82

83

84

85

86

87

88

89

90

91

92

93

94

95

96

97

98

99

100

101

102

103

104

105

106

107

108

109

110

111

112

113

114

115

116

117

118

119

120

121

122

123

124

125

126

127

128

129

130

131

132

133

134

135

136

137

138

139

140

141

142

143

144

145

146

147

148

149

150

151

152

153

154

155

156

157

158

159

160

161

162

163

164

165

166

167

168

169

170

171

172

173

174

175

176

177

178

179

180

181

182

183

184

185

186

187

188

189

190

191

192

193

194

195

196

197

198

199

200

201

202

203

204

205

206

207

208

209

210

211

212

213

214

215

216

217

218

219

220

221

222

223

224

225

226

227

228

229

230

231

232

233

234

235

236

237

238

239

240

241

242

243

244

245

246

247

248

249

250

251

252

253

254

255

256

257

258

259

260

261

262

263

264

265

266

267

268

269

270

271

272

273

274

275

276

277

278

279

280

281

282

283

284

285

286

287

288

289

290

291

292

293

294

295

296

297

298

299

300

301

302

303

304

305

306

307

308

309

310

311

312

313

314

315

316

317

318

319

320

321

322

323

324

325

326

327

328

329

330

331

332

333

334

335

336

337

338

339

340

341

342

343

344

345

346

347

348

349

350

351

352

353

354

355

356

357

358

359

360

361

362

363

364

365

366

367

368

369

370

371

372

373

374

375

376

377

378

379

380

381

382

383

384

385

386

387

388

389

390

391

392

393

394

395

396

397

398

399

400

401

402

403

404

405

406

407

408

409

410

411

412

413

414

415

416

417

418

419

420

421

422

423

424

425

426

427

428

429

430

431

432

433

434

435

436

437

438

439

440

441

442

443

444

445

446

447

448

449

450

451

452

453

454

455

456

457

458

459

460

461

462

463

464

465

466

467

468

469

470

471

472

473

474

475

476

477

478

479

480

481

482

483

484

485

486

487

488

489

490

491

492

493

494

495

496

497

498

499

500

501

502

503

504

505

506

507

508

509

510

511

512

513

514

515

516

517

518

519

520

521

522

523

524

525

526

527

528

529

530

531

532

533

534

535

536

537

538

539

540

541

542

543

544

545

546

547

548

549

550

551

552

553

554

555

556

557

558

559

560

561

562

563

564

565

566

567

568

569

570

571

572

573

574

575

576

577

578

579

580

581

582

583

584

585

586

587

588

589

590

591

592

593

594

595

596

597

598

599

600

601

602

603

604

605

606

607

608

609

610

611

612

613

614

615

616

617

618

619

620

621

622

623

624

625

626

627

628

629

630

631

632

633

634

635

636

637

638

639

640

641

642

643

644

645

646

647

648

649

650

651

652

653

654

655

656

657

658

659

660

661

662

663

664

665

666

667

668

669

670

671

672

673

674

675

676

677

678

679

680

681

682

683

684

685

686

687

688

689

690

691

692

693

694

695

696

697

698

699

700

701

702

703

704

705

706

707

708

709

710

711

712

713

714

715

716

717

718

719

720

721

722

723

724

725

726

727

728

729

730

731

732

733

734

735

736

737

738

739

740

741

742

743

744

745

746

747

748

749

750

751

752

753

754

755

756

757

758

759

760

761

762

763

764

765

766

767

768

769

770

771

772

773

774

775

776

777

778

779

780

781

782

783

784

785

786

787

788

789

790

791

792

793

794

795

796

797

798

799

800

801

802

803

804

805

806

807

808

809

810

811

812

813

814

815

816

817

818

819

820

821

822

823

824

825

826

827

828

829

830

831

832

833

834

835

836

837

838

839

840

841

842

843

844

845

846

847

848

849

850

851

852

853

854

855

856

857

858

859

860

861

862

863

864

865

866

867

868

869

870

871

872

873

874

875

876

877

878

879

880

881

882

883

884

885

886

887

888

889

890

891

892

893

894

895

896

897

898

899

900

901

902

903

904

905

906

907

908

909

910

911

912

913

914

915

916

917

918

919

920

921

922

923

924

925

926

927

928

929

930

931

932

933

934

935

936

937

938

939

940

941

942

943

944

945

946

947

948

949

950

951

952

953

954

955

956

957

958

959

960

961

962

963

964

965

966

967

968

969

970

971

972

973

974

975

976

977

978

979

980

981

982

983

984

985

986

987

988

989

990

991

992

993

994

995

996

997

998

999

1000

1001

1002

1003

1004

1005

1006

1007

1008

1009

1010

1011

1012

1013

1014

1015

1016

1017

1018

1019

1020

1021

1022

1023

1024

1025

1026

1027

1028

1029

1030

1031

1032

1033

1034

1035

1036

1037

1038

1039

1040

1041

1042

1043

1044

1045

1046

1047

1048

1049

1050

1051

1052

1053

1054

1055

1056

1057

1058

1059

1060

1061

1062

1063

1064

1065

1066

1067

1068

1069

1070

1071

1072

1073

1074

1075

1076

1077

1078

1079

1080

1081

1082

1083

1084

1085

1086

1087

1088

1089

1090

1091

1092

1093

1094

1095

1096

1097

1098

1099

1100

1101

1102

1103

1104

1105

1106

1107

1108

1109

1110

1111

1112

1113

1114

1115

1116

1117

1118

1119

1120

1121

1122

1123

1124

1125

1126

1127

1128

1129

1130

1131

1132

1133

1134

1135

1136

1137

1138

1139

1140

1141

1142

1143

1144

1145

1146

1147

1148

1149

1150

1151

1152

1153

1154

1155

1156

1157

1158

1159

1160

1161

1162

1163

1164

1165

1166

1167

1168

1169

1170

1171

1172

1173

1174

1175

1176

1177

1178

1179

1180

1181

1182

1183

1184

1185

1186

1187

1188

1189

1190

1191

1192

1193

1194

1195

1196

1197

1198

1199

1200

1201

1202

1203

1204

1205

1206

1207

1208

1209

1210

1211

1212

1213

1214

1215

1216

1217

1218

1219

1220

1221

1222

1223

1224

1225

1226

1227

1228

1229

1230

1231

1232

1233

1234

1235

1236

1237

1238

1239

1240

1241

1242

1243

1244

1245

1246

1247

1248

1249

1250

1251

1252

1253

1254

1255

1256

1257

1258

1259

1260

1261

1262

1263

1264

1265

1266

1267

1268

1269

1270

1271

1272

1273

1274

1275

1276

1277

1278

1279

1280

1281

1282

1283

1284

1285

1286

1287

1288

1289

1290

1291

1292

1293

1294

1295

1296

1297

1298

1299

1300

1301

1302

1303

1304

1305

1306

1307

1308

1309

1310

1311

1312

1313

1314

1315

1316

1317

1318

1319

1320

1321

1322

1323

1324

1325

1326

1327

1328

1329

1330

1331

1332

1333

1334

1335

1336

1337

1338

1339

1340

1341

1342

1343

1344

1345

1346

1347

1348

1349

1350

1351

1352

1353

1354

1355

1356

1357

1358

1359

1360

1361

1362</



Select either the SB-1/SB-9/SB-10 at the top of the order form and then follow the steps below.

SB-1/SB-9/SB-10

"ORDERING GUIDE" for Specification Form - GED-3934 - Part 1

1 HANDLE POSITION

The handle position location areas are shown front view, facing the handle. Select the desired degrees between positions and mark the position numbers. Going in a clockwise direction, Position 1 starts in the extreme counter-clockwise (CCW) position. When 360-degree rotation is required, Position 1 starts at 12 o'clock. Examples of notations see *pgs. 63-64*.

2 CONTACT ARRANGEMENT

The vertical columns on the left (numbers 1 to 32) are the contacts. The position numbers should be marked in the top column under "Handle Positions (Back View)". The term "Back View" means that the positions are read from right-to-left for the contact arrangement only.

An asterisk between the position number is used to indicate intermediate position to show the special contact action desired between the designated positions. Intermediate positions can be supplied on switches with 45° or more between positions (some types: 37-1/2°).

For information on Lateral Contacts see Section 9 & 10 on Specification Form - Part 1. For information on SLIP-CAMS see examples on Specification Ordering Guide - Part 2. Examples of notations see *Fig. 61A, 63-A and 65A*.

Examples of Filled-Out Forms on Page 66

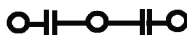
3 CONTACT CONNECTIONS

Mark the contact connections desired for each stage in the manner shown.

ELECTRICALLY SEPARATE
(Supplied if connection type not specified)



ELECTRICALLY SEPARATE
WITH COMMON TERMINAL



ELECTRICALLY COMMON
WITHOUT COMMON
TERMINAL FOR
DOUBLE-BREAK ACTION



Examples of notations see *pg. 63*.

4 ENGRAVING

Under "Position", indicate the position numbers which are marked in the handle-position portion **1** of the form. Indicate the desired engraving for the position next to it under "Escutcheon Engraving". Maximum of 8 character spaces. The circuit designation, if desired, is marked in the circuit plate engraving block above the escutcheon engraving. Maximum of 22 character spaces.

5 HANDLES

Check the appropriate block to indicate the design of the handles desired. Available handle types are shown on page 3. Examples of notations see *pg. 63*.

6 ESCUTCHEONS

Check the block next to the desired escutcheon. For information and illustrations on the available escutcheons, refer to the Special Features Section in this publication. Target escutcheon is available only with spring return actions of 45° CW, 45° CCW, 75° CCW.

When a keyed escutcheon is checked, the position in which the handle is to be removable must be given, along with any other necessary information.

7 ROTATING ACTION

1. *Maintaining All Positions* - When the handle is maintained in all positions, check this block.

2. *Spring Return Action* - Can be provided from both directions to NORMAL, or from one direction to NORMAL.

Maintaining Position - When spring-return and maintained action is desired, both the spring-return positions, as per above, and the maintained positions should be marked.

3. *Pull-to-Lock In Position* - When a pull-to-lock action is desired fill-in the position number in which the handle is to be pulled and latched. Examples of notations see *Fig. 63D-63K*.

8 PANEL THICKNESS

Give the panel thickness in inches. This information is very important in selecting the proper shaft and spacers, however, it is frequently not specified. If the panel thickness is not given, the switch will be furnished for mounting on panels up to 3/16-inch thick. Most switches can be furnished for mounting in panels up to two-inches (32/16") thick.

LATERAL CONTACT SECTION for SB-10 SWITCHES Only:

9 LATERAL CONTACT STAGES

Complete this section only when ordering a Type SB-10 Switch which has both lateral and rotary contacts.

Examples of Filled-Out Forms on Page 66

To identify the lateral stages, mark a dot(s) to the far left outside of the contact connection diagram **3**. (Maximum: four lateral stages, two contacts per stage). Add "X" for each desired stage **9**. For each lateral stage used, avoid that stage in Contact Arrangement Table (in **2**).

Note: Do not put an "X" under the handle positions for these contacts. An "X" is used only for the rotary contacts.

10 LATERAL CONTACT ACTION

If you want to prevent rotary action in one of the lateral positions (either IN or OUT), cross out the other position. If you want rotary action in both the IN and OUT positions, cross out the word "NO" and add the designation "&" on the line between the words "IN" and "OUT".

If the handle is to be maintained in both the IN and OUT positions, cross out "Spring Return to IN/OUT".

If the handle is to spring return to either the IN or OUT position, cross out the undesired position and Maintaining "IN" "OUT".

When rotary action is spring return, you can only have lateral spring return action when the lateral action is in the "NORMAL" (rotary spring released) position. The maximum number of lateral contacts that can be provided to open with the lateral spring action is four.

First select the proper action ("Pull" or "Push") and write in the position in which this action is to take place, then, write in the contact numbers for the contact action desired. Refer to Table 2 - page 7 for the lateral action available. Refer to Fig. 65A for examples of notations.

For Options - See GED-3934 Form - Part 2








GE Multilin • 215 Anderson Avenue • Markham, Ontario • L6E 1B3 Canada • Phone: (905) 294-6222

This form may be photocopied for your convenience

Select the Type of Switch Required:

☐ ⁹¹SB-1 ☐ ⁹SB-9 ☐ ¹SB-10

1 HANDLE POSITIONS(Front View) Mark Position Numbers

 90°	 90°	 45°	 37-1/2°
SPECIAL	 60°	 30°	 75°

ON SB-10 SWITCHES MARK LAT.
STAGES WITH A DOT. (•)

3 CONTACT CONNECTIONS

(HANDLE END)
ODD|EVEN

[illegible]

Bottom Top Bottom = Terminal Location

2 CONTACT ARRANGEMENT

Mark "X" for Closed Contact

Mark "X" for Closed Contact

HandlePositions (Back View)

[illegible]

9 LATERAL CONTACT STAGES

⊥	⊥	1	
		2	
⊥	⊥	3	
		4	
⊥	⊥	5	
		6	
⊥	⊥	7	
		8	

Add "X" for Each Desired Lateral Stage.
For Each Lateral Stage marked here, leave that stage blank in the Contact Arrangement Table.
See **2**.

SB-1/SB-9/SB-10

"SPECIFICATION FORM" GED-3934 - Part 1

4 ENGRAVING

[illegible]

5 HANDLES

Knurled	<input type="checkbox"/>
Oval	<input type="checkbox"/>
Pistol Grip	<input type="checkbox"/>
Lever	<input type="checkbox"/>
Round	<input type="checkbox"/>
Radial	<input type="checkbox"/>
L. Pistol grip	<input type="checkbox"/>
None	<input type="checkbox"/>

ESCUTCHEON

Standard or Round	<input type="checkbox"/>
Target	<input type="checkbox"/>
Removable Handle	<input type="checkbox"/>
Keyed for Removable in Position ()	

7 ROTATING ACTION

Maintaining All Positions	<input type="checkbox"/>
<u>Spring Return Action</u> A	
S.R. from CCW Position From Pos () To ()	
S.R. from CW Position From Pos () To ()	
Maintaining Position (_ _ _)	
Pull to Lock in Position ()	

▲ No Spring Return Below Horizontal Center Line.

8 PANEL THICKNESS () / 16" Specify Only in increments of 16th of an Inch

SPECIAL REMARKS: _____

LATERAL CONTACTS FOR SB-10 SWITCHES ONLY

9 LATERAL CONTACT STAGES

10 LATERAL CONTACT ACTION* Cross Out the Action which does not apply

No Rotation when	IN	OUT
Maintaining	IN	OUT
Spring return to	IN	OUT
PULL	PUSH	In Position ()
To Close Contacts ()		
To Open Contacts ()		

* No Spring Return Lateral & Rotary Unless Locked in "N" Position.



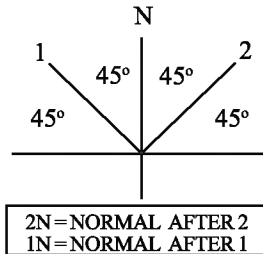
SB-1/SB-9/SB-10

"ORDERING GUIDE" for Specification Form - GED-3934 - Part 2

Fig. 61A: Examples of "SLIP-CAM" Contacts

	2	2N	1N	1
1			X	X
2			X	X

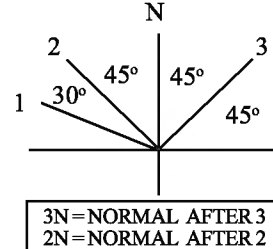
	2	2N	1N	1
1	X	X		
2			X	X



(See Section CAM Action and Limitations • See page 12)

	3	3N	2N	2	1
1			X	X	X
2			X	X	X

	3	3N	2N	2	1
1	X	X			
2	X	X			



11 SPECIFYING OPTIONAL FEATURES

Certain optional features are available with the SB-1, -9 and -10 switches, but not necessarily to all of them. Determine whether the option you required is available with the type of switch you are specifying, and check the appropriate block as described below.

12 LOCK-IN HANDLE

Specify the position or positions in which the handle is to lock. All locks will be furnished with two keys, unless otherwise specified. (Not available with "Push or Pull to Lock"; nor "Push or Pull to Turn")

13 SEPARATELY MOUNTED LOCK

SB switches are available with a standard lock and key, or with a Kirk Key-Interlock System. Only one key "cut" is available with the standard lock. Two keys are furnished with each lock. Check the proper block. If Kirk Key-Interlock is checked, fill out the coordination information. Be sure the panel thickness is given.

The switch is furnished with the lock for mounting *above* the switch, as shown under standard mountings, and identified as Lock No. 1. Complete the description "Lock No. 1; locks and the key is removable in Pos.()". If mounting the lock above the switch is not feasible, or when two locks (each locking in a different position) are required, the locks can be mounted to the right, to the left, or below the switch.

To identify the location, the locks are numbers 2, 3 and 4 under "Special Mounting". Fill in the lock number in the description below and the position in which each lock is to lock.

The following Coordination Information
is required for utilizing the
Kirk Key-Interlock Scheme

To ensure a designated key change is furnished only to the customer and equipment assigned, the following information is required:

1. Fill-in the "Ultimate Customer's Name and Address", plus the name of the substation or building if applicable.

2. Provide the "Initial Purchase Order Number" of the coordinated Kirk locks presently installed to match the present key / lock scheme. If this is a new placement and a new key change is required, state it on your purchase order and we will document the new designated key change.

3. Provide the "Drawings of any Kirk Scheme Already Submitted" or a copy of the drawing. If the key change has already been assigned, as on reorders, specify the key change number.

Be sure this information is complete and correct when placing the order.

14 TANDEM SWITCHES

When a switch with more than 16 stages is required, two or more switches can be assembled in tandem, operating with one handle. The switches are normally mounted horizontally, but can also be furnished vertically mounted. Show the location of the switches and handle on the sketch provided for up to four switches in tandem. The corresponding switch numbers on the sketch should also be on the contact arrangement specification form. Draw in the handle to show its location, or specify the switch number on which the handle will be mounted. When more than four switches, or a different arrangement is required, use a separate sheet showing the proper switch arrangement.

Only the switch with handle can be provided as a "Pull to Lock" or SB-10.

15 PULL-TO-TURN/PUSH-TO-TURN

If the handle is to rotate in the "IN" position, indicate what position or positions; if it is not to rotate in the "IN" position, write "none". Fill in the position number in which the handle is to be pulled and state to what position, or positions, you will be rotating. Cross-out unwanted selections. For Push-to-Turn action fill-in a similar manner.

16 PALLADIUM CONTACTS

Check this block if required. Palladium contacts are available for temperature-meter switches (see "Temperature-meter Switches" - Page 17). If for a special application where some of the contacts are palladium, but not all, specify requirement in this block or on the contact arrangement.



This form may be photocopied for your convenience

SB-1/SB-9/SB-10

"SPECIFICATION FORM" GED-3934 - Part 2

Continued from Part 1

To be used with GED-3934 Form - Part 1

11 "OPTIONAL FEATURES"

12

LOCK-IN-HANDLE - [SB-1 or SB-9]

Corbin Lock Replacement
Handle Locks and Key Removable in Position ()
Special ()

13

SEPARATELY MOUNTED LOCK - [SB-1, SB-9 or SB-10]

Standard Lock and Key
Kirk Key-Interlock Scheme
*Coordination Information must be completed
below when Kirk Lock is checked*

Panel Thickness

STANDARD MOUNTING SPECIAL MOUNTING

No. 1 No. 2 No. 3
No. 4

Lock No. (1); Locks and Key is Removable in Pos. ()
Lock No. (); Locks and Key is Removable in Pos. ()

*The following coordination information
is required for Kirk Key-Interlock Scheme*

1. Ultimate Customer's Name & Address

2. Purchase Order of Coordinating Locks

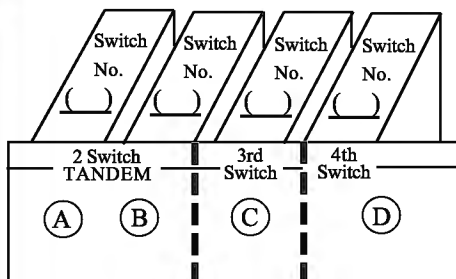
P.O. No. _____

3. Coordinating Information (KNOWN KEY No. & PRINT)

14

TANDEM SWITCH (Geared) - [SB-1, SB-9 or SB-10]

Vertically Mounted
Horizontally Mounted



1. Indicate the Switch No. required and cross-out the switch(es) not required.
2. Use a separate form showing the proper switch arrangement for each switch above and write Switch No. on Specification Form - Part 1 . . .
3. Indicate Handle at location A, B, C, or D above.
4. Indicate the type of handle on Specification Form (See Step 5).

**A LARGE PISTOL GRIP HANDLE IS RECOMMENDED
TO EASE IN TURNING TO VARIOUS POSITIONS**

15

PULL-TO-TURN/PUSH-TO-TURN - [SB-1 or SB-9]

Rotates in Positions () when Handle is "IN"/ "OUT"

PULL "OUT" / PUSH "IN" in Position ()
to Rotate to Position ()

16

PALLADIUM CONTACTS - [SB-1, SB-9 or SB-10] ☐

Check
this block
if Required

CHECK PROPER BLOCKS AND COMPLETE REQUIRED INFORMATION.

See Separate "Ordering Guide" for this "Specification Form" on Page 59