



GE Renewal Parts

Use original equipment parts for reliability
PARTS BULLETIN

UNCONTROLLED COPY

See On-Line Master for Current Revision

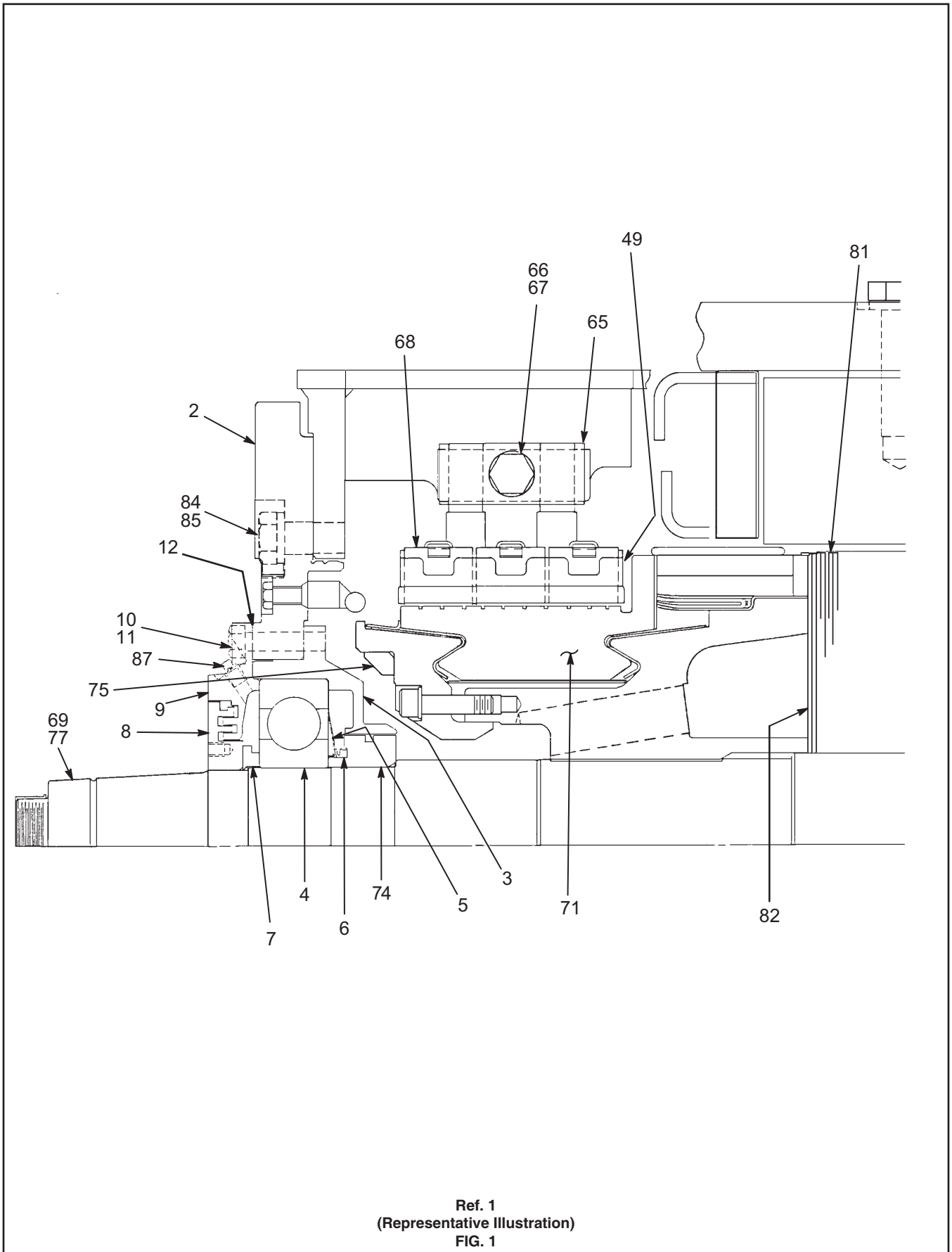
DRILLING MOTOR MODEL 5GE752AUT2

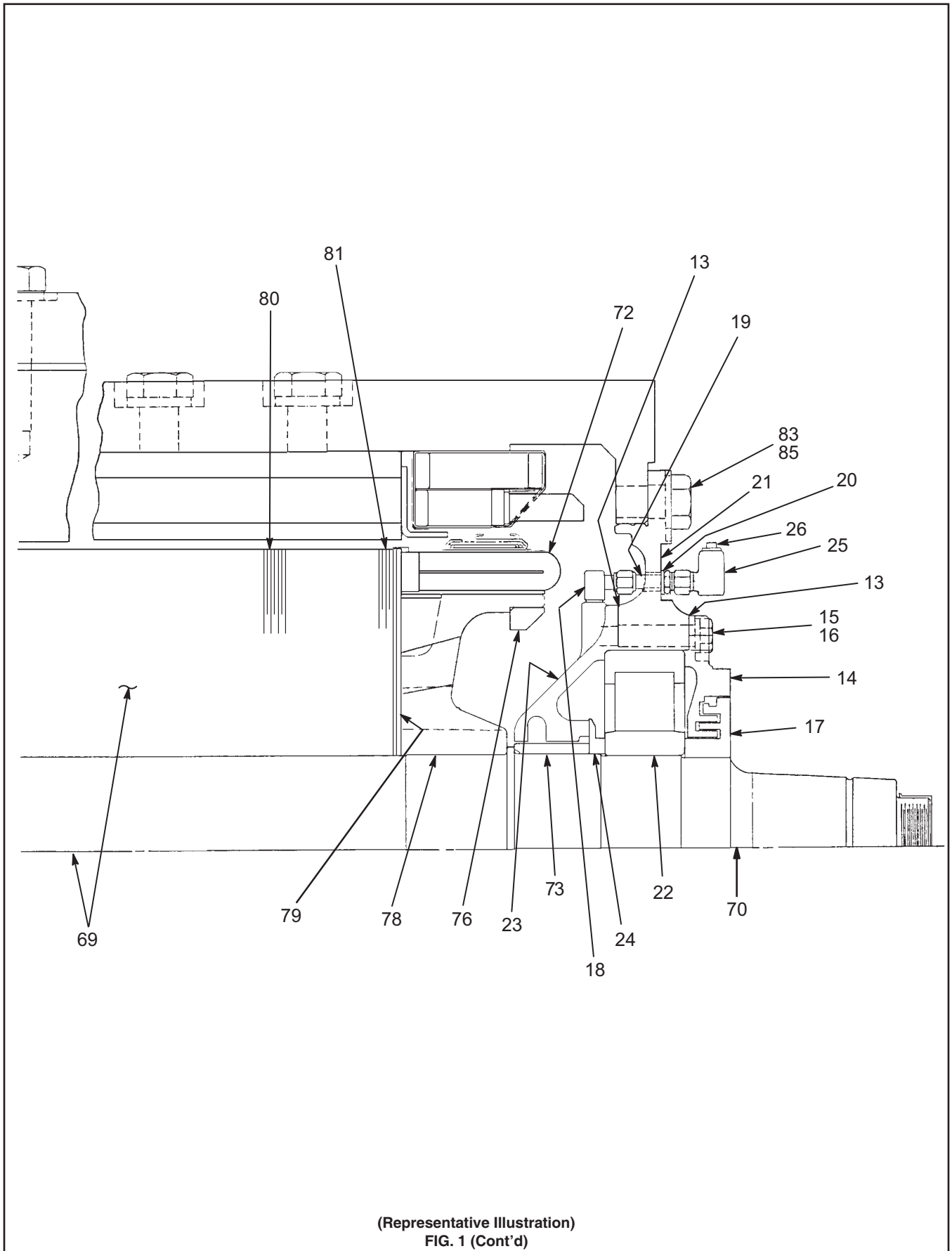
21-OCT-2009

© 2006 General Electric Company. All rights reserved. The information contained in this publication is the property of General Electric Company and is disclosed in confidence. This publication is intended for use by GE customers solely for purposes of operating and conducting normal running maintenance of purchased or licensed GE products, and it shall not be reproduced, redistributed, retransmitted, translated, abridged, adapted, condensed, revised or otherwise modified, in any form, in whole or in part, or used for any other purpose, without the express written consent of GE. However, if a GE customer ("Customer") requires additional copies of this document or portions thereof for internal use, GE hereby grants to Customer a limited right to reproduce this publication, in whole or in part, and Customer agrees to use such authorized copies ("Copies") solely for its intended purposes. Any Copies made under this limited reproduction right shall contain this notice and any other legal notices appearing in this publication. The Customer shall be responsible for complying with U.S. export control laws with respect to distribution of all Copies.

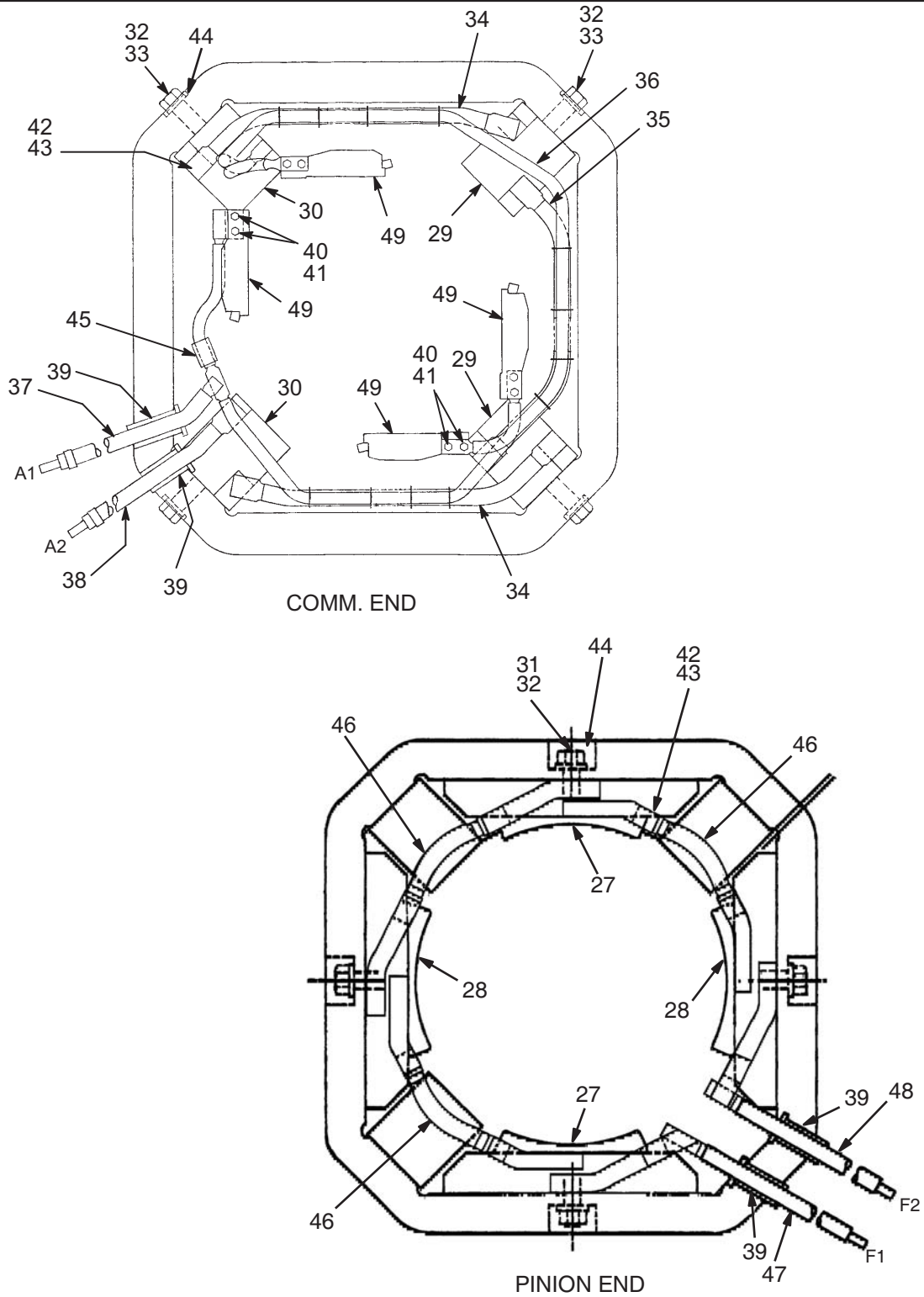
GE and Customer agree that the information contained herein does not purport to cover all details or variations in GE products or to provide for every possible contingency with installation, operation or maintenance. Should further information be desired or should particular problems arise that are not covered sufficiently for the user's purposes, the matter should be referred to General Electric Company. Any applicable Federal, State or local regulations or company safety or operating rules must take precedence over any information or instructions given in the Technical Documentation. GE has no obligation to keep the material up to date after the original publication.

GENERAL ELECTRIC COMPANY EXPLICITLY DISCLAIMS ALL WARRANTIES OF ACCURACY, MERCHANTABILITY OR FITNESS FOR ANY PURPOSE IN CONNECTION WITH THE TECHNICAL DOCUMENTATION AND USE THEREOF.

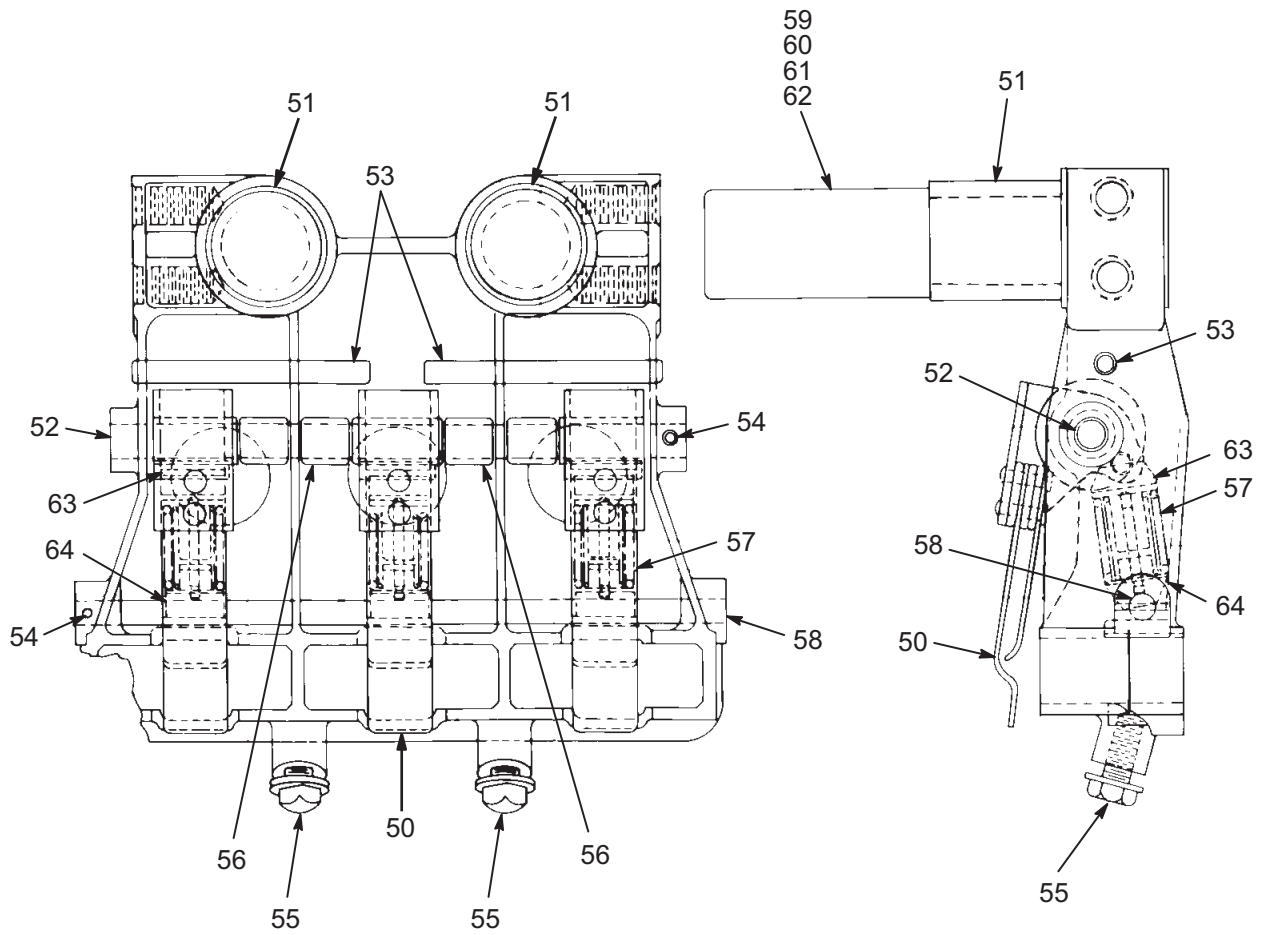




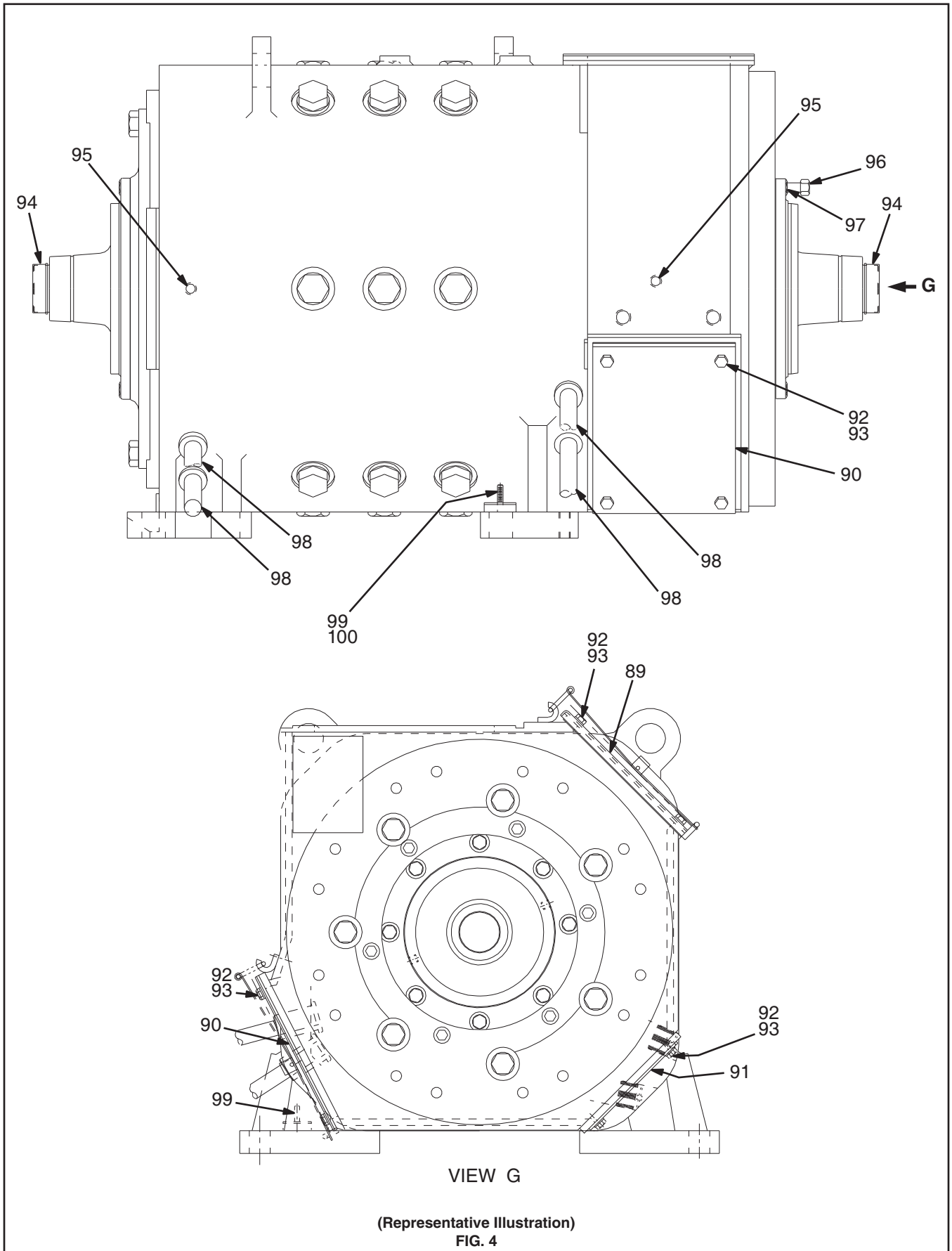
(Representative Illustration)
FIG. 1 (Cont'd)



(Representative Illustration)
FIG. 2



Ref. 49
(Representative Illustration)
FIG. 3



(Representative Illustration)
FIG. 4

GE Proprietary and Confidential Information
UNCONTROLLED COPY **PB-31101-023C**
DRILLING MOTOR MODEL 5GE752AUT2
See On-Line Master for Current Revision

FIG. NO.	REF. NO.	PART NO.	QTY	DESCRIPTION
1	1	5GE752AUT2	1	DRILLING MOTOR (SEE PB-31101-023)
1	2	41C635474G2	1	FRAME HEAD
0	2A	481A560G1	1	FLASH RING
0	2B	N22P29020B13	6	BOLT, HEX HD, 1/2 IN-13, 1 1/4 IN LONG
1	3	41C637267P1	1	BEARING HOUSING
1	4	8864950P195	1	BALL BEARING
1	5	41A239929P3	1	SEAL RING
1	6	41A330363P1	1	V-RING SEAL
1	7	41A237207P1	1	SPACER, 6 5/8 IN OD
1	8	493A540P1	1	SLEEVE, 9 19/32 IN OD
1	9	41B537478P1	1	BEARING CAP, COMMUTATOR END
1	10	N22P33044B13	8	BOLT, HEX HD, 5/8 IN-11, 2 3/4 IN LONG
1	11	N405P47B13	8	LOCKWASHER, 5/8 IN
1	12	493A546P1	1	GASKET, 14 11/16 IN OD
1	13	4732906P1	2	GASKET, 0.021 IN THICK, 15 IN OD
1	14	2739317P1	1	BEARING CAP
1	15	N405P47B13	8	LOCKWASHER, 5/8 IN
1	16	N22P33056B13	8	BOLT, HEX HD, 5/8 IN-11, 3 1/2 IN LONG
1	17	4732351P1	1	SLEEVE, 9 7/32 IN OD
1	18	41A330230P4	1	SWIVEL ADAPTER, 90 DEG
1	19	41A330230P3	1	TUBE UNION, BULKHEAD
1	20	N402P46B13	2	WASHER, 9/16 IN
1	21	41C636958P1	1	FRAME HEAD
1	22	8864951P167	1	ROLLER BEARING
1	23	41C636257P4	1	BEARING CAP, PINION END
1	24	4713640P1	1	FLINGER, 8 1/4 IN OD
1	25	41A330283P1	1	FITTING, 90 DEG
1	26	N5700P31	1	PIPE PLUG, SQ HD, 1/4 IN
2	27	41E903886G9	2	COIL WITH POLE PIECE, EXCITING
2	28	41E903886G10	2	COIL WITH POLE PIECE, EXCITING
0	28A	41B537112G2	4	POLE PIECE, EXCITING COIL
2	29	41C636992G5	2	COIL WITH POLE PIECE, COMMUTATING
2	30	41C636992G7	2	COIL WITH POLE PIECE, COMMUTATING
0	30A	41B535341G1	4	POLE PIECE, COMMUTATING FIELD COIL
2	31	4713691P2	12	BOLT, HEX HD, 1 1/4 IN-7, 3 3/4 IN LONG
2	32	41B537660P22	24	WASHER, FLAT, 1.313 IN ID, 2.500 IN OD
2	33	41B538389P172	12	BOLT, HEX HD, 1 1/4 IN-12, 4 IN LONG
2	34	41B537185G2	2	CABLE ASSEMBLY
2	35	41B537185G1	1	CABLE ASSEMBLY
2	36	41C636558G1	1	CABLE ASSEMBLY
2	37	41C637107G1	1	CABLE ASSEMBLY
2	38	41C637107G6	1	CABLE ASSEMBLY
2	39	481A539P40	4	CABLE BUSHING, 1 9/16 IN ID, RUBBER
2	40	N22P27016B13	8	BOLT, HEX HD, 7/16 IN-14, 1 IN LONG
2	41	N405P44B13	8	LOCKWASHER, 7/16 IN
2	42	41A231281P48	16	BRAZING STRIP, 1 IN X 1 1/2 IN LONG
2	43	41A330300P2	AR	BRAZING ALLOY, 0.050 X 0.062 IN
2	44	497A806P60	AR	ADHESIVE, RTV SILMATE 1473
2	45	41A231248P2	1	PAD, 5/32 IN, 3/4 IN, 2 1/4 IN

GE Proprietary and Confidential Information
UNCONTROLLED COPY
DRILLING MOTOR MODEL 5GE752AUT2
See On-Line Master for Current Revision

PB-31101-023C

FIG. NO.	REF. NO.	PART NO.	QTY	DESCRIPTION
2	46	84A206971P1	3	CONNECTION STRAP, 9 IN LONG
2	47	41C637107G7	1	CABLE ASSEMBLY
2	48	41C637107G8	1	CABLE ASSEMBLY
1,2,3	49	41C632667G6	4	BRUSH HOLDER ASSEMBLY
3	50	41B530659G2	12	PRESSURE ARM
3	51	186V831P1	8	SLEEVE
3	52	41A231378P2	4	PIN, 3/8 IN DIA, 6 5/8 IN LONG
3	53	N509P2548	8	PIN, SPRING DOWEL, 1/4 IN DIA, 3 IN LONG
3	54	N509P912B	8	PIN, SPRING DOWEL, 3/32 IN DIA, 3/4 IN LONG
3	55	41A230733P7	8	BOLT W/WASHERS, HEX HD SL, 5/16 IN-18, 3/4 IN LONG
3	56	41A231370P6	16	BUSHING, 0.575 IN LONG
3	57	41B537844G1	12	SPRING SET ASSEMBLY
3	58	41A233880P1	4	PIN, 7 7/16 IN LONG
3	59	41B535754G28	8	BRUSH HOLDER STUD, MOLDED (0.002 IN OVERSIZE)
3	60	41B535754G29	8	BRUSH HOLDER STUD, MOLDED (0.004 IN OVERSIZE)
3	61	41B535754G30	8	BRUSH HOLDER STUD, MOLDED (0.006 IN OVERSIZE)
3	62	41B535754G31	8	BRUSH HOLDER STUD, MOLDED (0.008 IN OVERSIZE)
3	63	41A330248P1	12	SPRING SEAT
3	64	41A233867G4	12	SPRING SEAT WITH PIN
1	65	2733755P7	4	BRUSH HOLDER SUPPORT
1	66	N22P37052B13	4	BOLT, HEX HD, 7/8 IN-9, 3 1/4 IN LONG
1	67	41B537660P25	4	WASHER, FLAT, 0.968 IN ID, 1.375 IN OD
1	68	41B537963P1	12	CARBON BRUSH
1	69	41D735775G5	1	ARMATURE ASSEMBLY
1	70	41C636927P1	1	ARMATURE SHAFT
1	71	41B537889G2	1	COMMUTATOR, SEASONED
1	72	41D735370G6	1	ARMATURE REWIND KIT
1	73	41A239330P1	1	COLLAR
1	74	41A330312P1	1	SLEEVE
1	75	2766829ADP24	AR	BALANCE WEIGHT, 13 IN OD
1	76	2766829ADP26	AR	BALANCE WEIGHT, 14 3/4 IN OD
1	77	84A204808P1	2	SET SCREW, HEX SOC HD, 3/8 IN-24, SELF-LOCK
1	78	41B537605P4	1	ARMATURE HEAD
1	79	41A239323G1	1	PUNCHING, END
1	80	41B537164P2	580	PUNCHING, MAIN
1	81	41B537165P3	44	PUNCHING, STEP BACK
1	82	41A330418G1	1	PUNCHING, END
1	83	N22P39032	AR	BOLT, HEX HD, 1 IN-8, 2 IN LONG
1	84	N22P39036	AR	BOLT, HEX HD, 1 IN-8, 2 1/4 IN LONG
1	85	41B537660P20	AR	WASHER, FLAT, 1.063 IN ID, 2 IN OD
1	86	497A806P60	AR	ADHESIVE, RTV SILMATE 1473
1	87	N5700P31	2	PIPE PLUG, SQ HD, 1/4 IN
0	88A	493A471P1	2	HUB, 9.120 IN OD, POWER TAKE-OFF
4	89	41C636513G1	1	INSPECTION COVER, UPPER
0	89A	41C636513P11	2	GASKET, 9 3/4 IN LONG, 1/4 IN THICK
0	89B	41C636513P12	2	GASKET, 11 1/4 IN LONG, 1/4 IN THICK
0	89C	497A806P12	AR	CEMENT
4	90	41D732878G4	1	INSPECTION COVER, LOWER
0	90A	41D732878P7	2	GASKET, 9/16 IN X 11 9/32 IN LONG, 1/4 IN THK

UNCONTROLLED COPY
DRILLING MOTOR MODEL 5GE752AUT2
See On-Line Master for Current Revision

GE Proprietary and Confidential Information

PB-31101-023C

FIG. NO.	REF. NO.	PART NO.	QTY	DESCRIPTION
0	90B	41D732878P8	2	GASKET, 9/16 IN X 9 1/2 IN LONG, 1/4 IN THK
0	90C	497A806P12	AR	CEMENT
4	91	41A239914G1	1	INSPECTION COVER, HAND HOLE
0	91A	41A239914P2	2	GASKET, 9 1/4 IN LONG, 1/4 IN THICK
0	91B	41A239914P3	2	GASKET, 8 1/8 IN LONG, 1/4 IN THICK
0	91C	497A806P12	AR	CEMENT
4	92	N22P29016B13	12	BOLT, HEX HD, 1/2 IN-13, 1 IN LONG
4	93	N405P45B13	12	LOCKWASHER, 0.50 INCH
4	94	41A235989P10	2	PLUG
4	95	N5700P51	2	PIPE PLUG, SQ HD, 1/2 IN
4	96	41B535510G3	2	BOLT, 5/8 IN-11, 4.54 IN LONG
4	97	N203P33B13	2	NUT, HEX, 5/8 IN-11
4	98	41A296329ABP2	4	TAB, CABLE MARKER (SPECIFY STAMPING REQD)
4	99	41A235078P57	1	STUD, 3/8 IN-16, 1 3/4 IN LONG
4	100	497A806P78	1	THREADLOCKER 271, HIGH STRENGTH

21-OCT-2009

