



PB-31101-038

## **GE Renewal Parts**

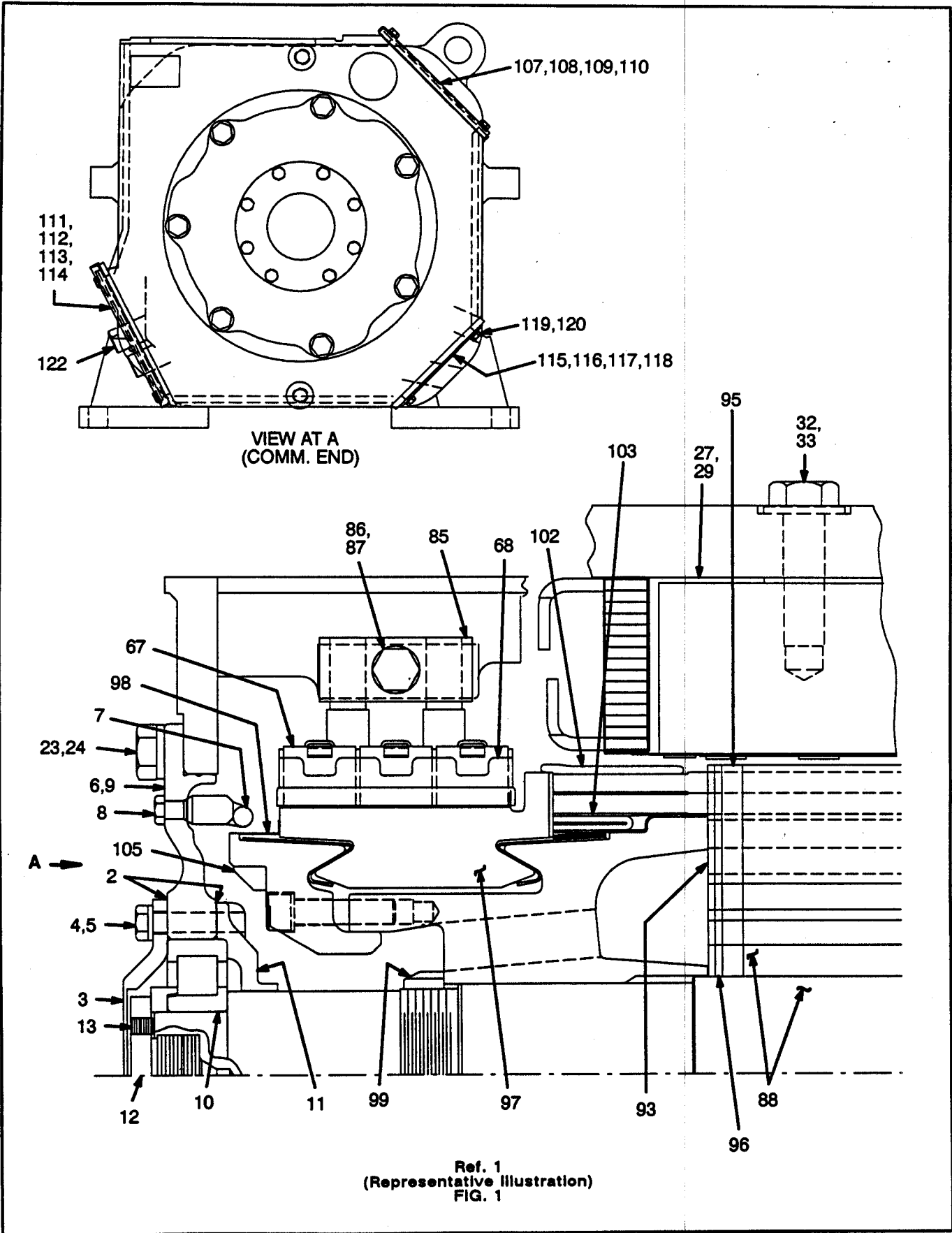
*Use original equipment parts for reliability*

**PARTS BULLETIN**

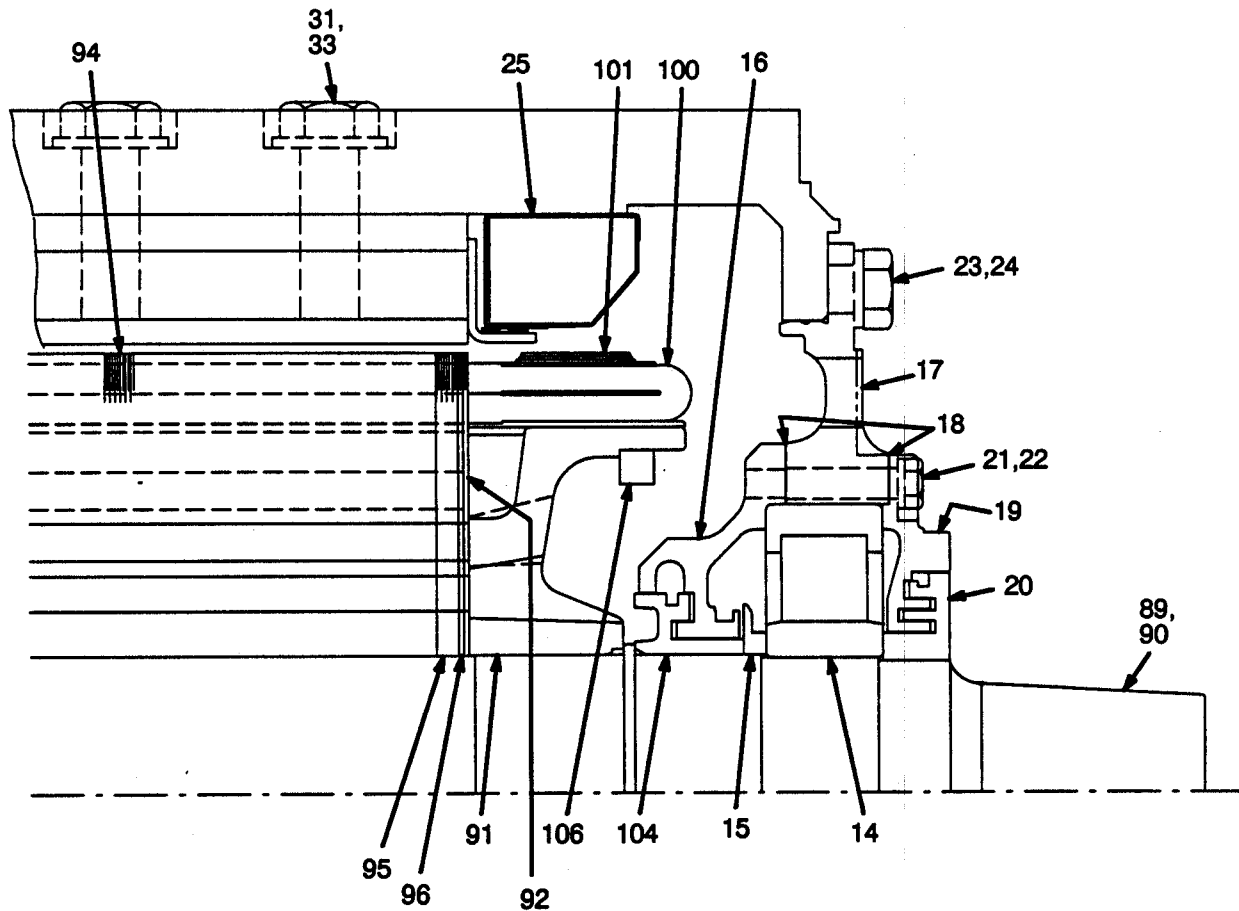
**DRILLING MOTOR  
MODEL 5GE752ARB3B**

AUGUST 3, 1992

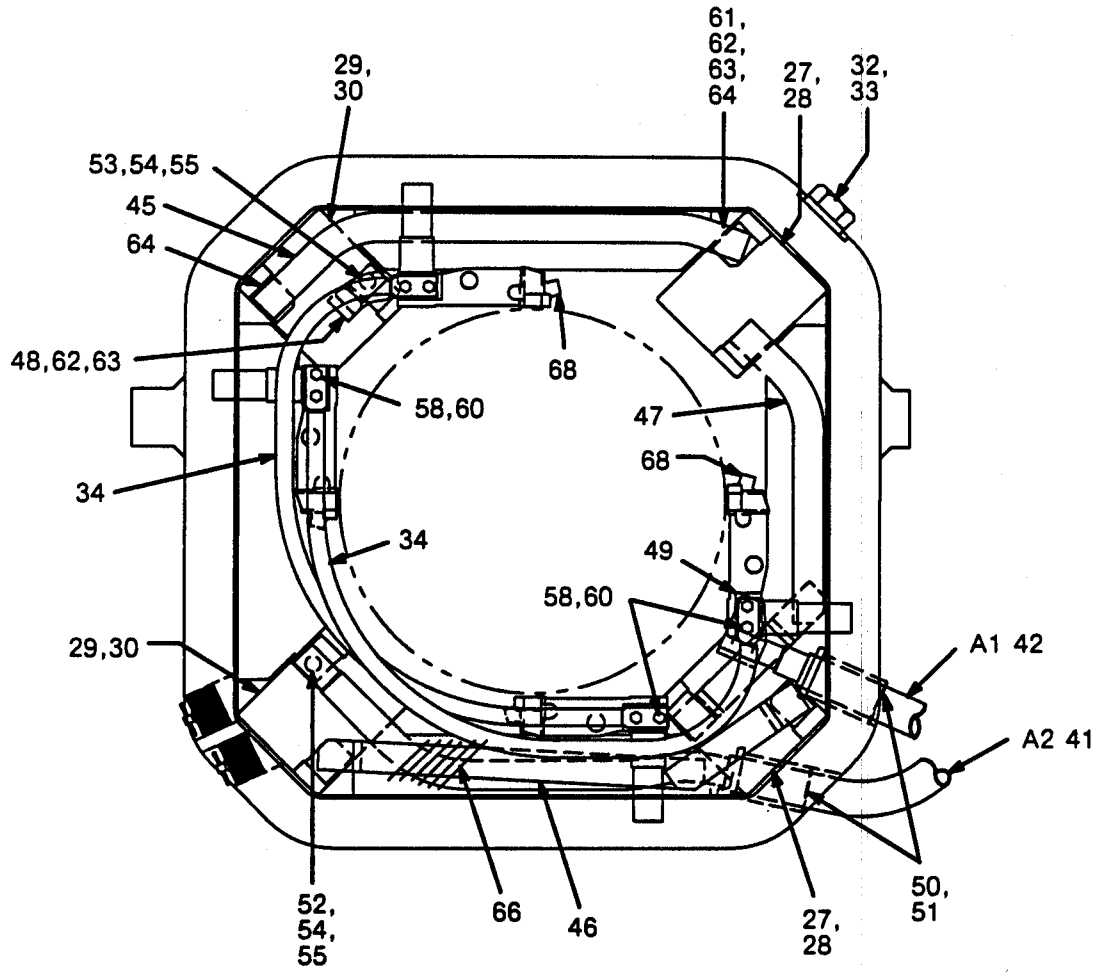
© Copyright 1992 General Electric Company. All rights reserved. This copyrighted document may be reproduced free of charge by General Electric Company customers, if such reproduction is used exclusively in that customer's internal operation.



Ref. 1  
(Representative Illustration)  
FIG. 1

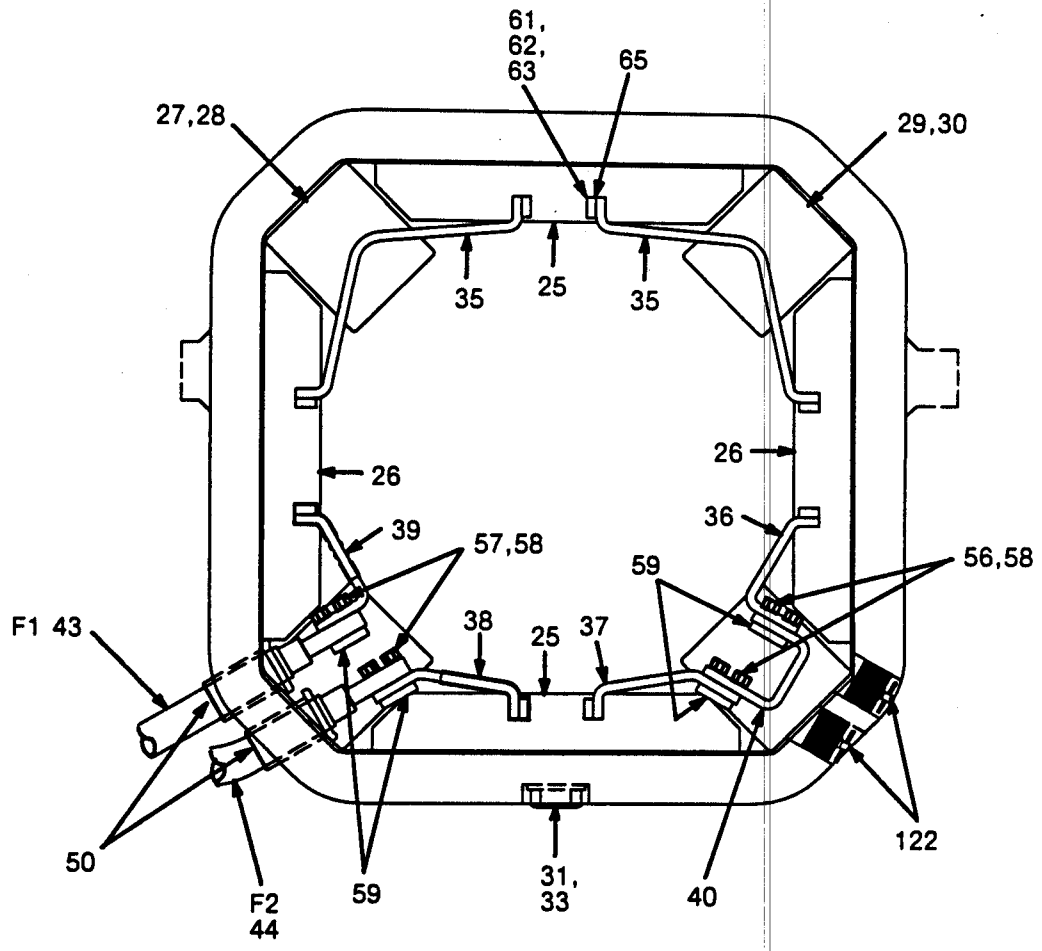


(Representative Illustration)  
FIG. 1 (Cont'd.)



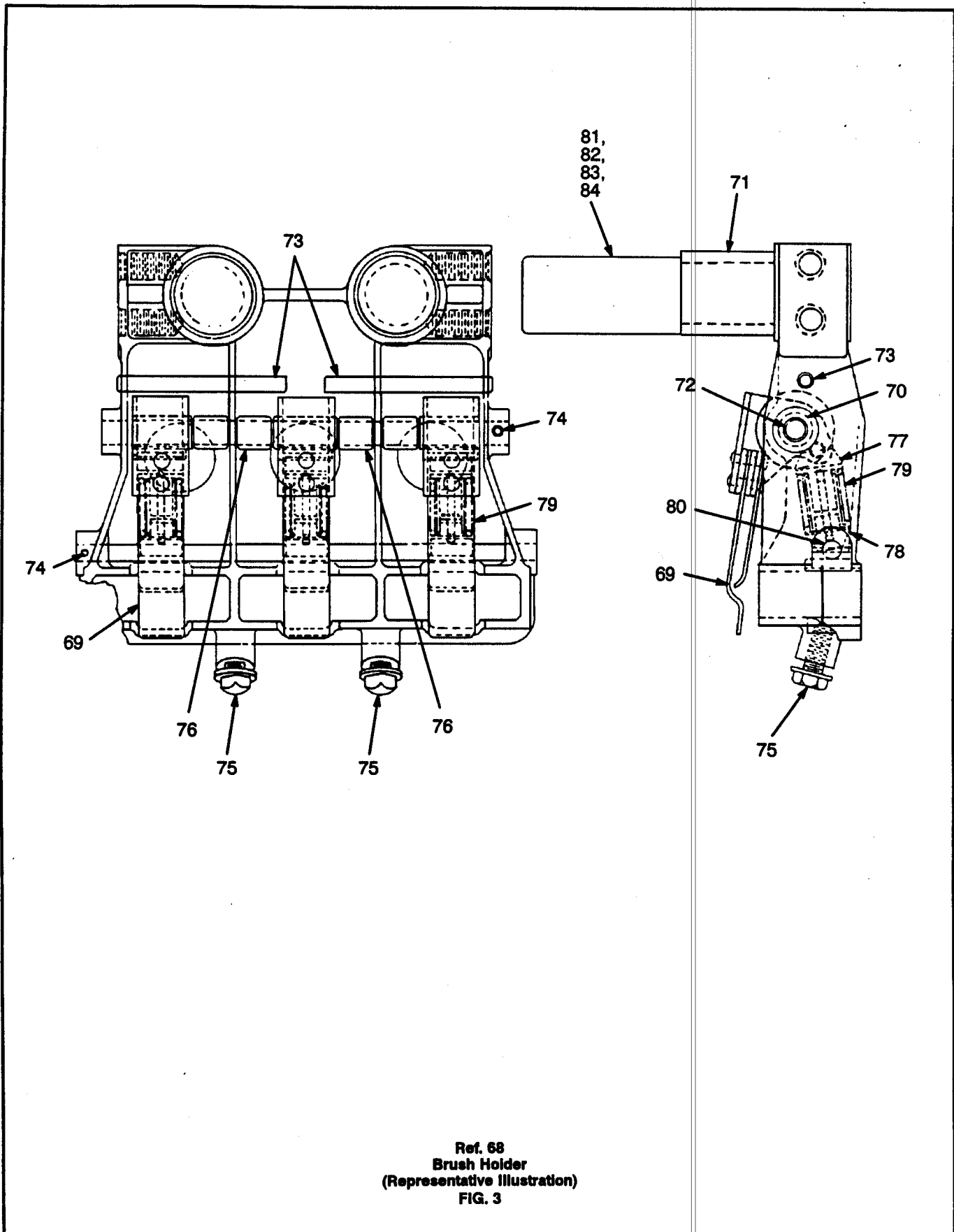
VIEW OF COMMUTATOR END

(Representative Illustration)  
FIG. 2



VIEW OF PINION END

(Representative Illustration)  
FIG. 2 (Cont'd.)



Ref. 68  
Brush Holder  
(Representative Illustration)  
FIG. 3

FIG. NO.	REF. NO.	PART NO.	QUANT	DESCRIPTION
			REQ. COL. A	
1	1	5GE752ARB3B	1	DRILLING MOTOR
1	2	4732368P1	2	+GASKET, 0.021 IN THK
1	3	6739891P1	1	BEARING CAP
1	4	N22P33048	8	BOLT, HEX HD, 5/8 IN-11, 3 IN LONG
1	5	41B537660P9	8	WASHER, FLAT, 0.725 IN ID, 1 IN OD
1	6	9949565G1	1	FRAME HEAD ASSEMBLY
1	7	481A560G1	1	FLASH RING
1	8	N22P29020B13	6	BOLT, HEX HD, 1/2 IN-13, 1 1/4 IN LONG
1	9	N509P2516	1	PIN, SPRING DOWEL, 1/4 IN DIA, 1 IN LONG
1	10	8864951P119	1	+ROLLER BEARING
1	11	334B761P1	1	BEARING CAP
1	12	949X47	1	RETAINING NUT WITH SET SCREW
1	13	41A239107P1	2	SCREW, HEX SOC HD, 1/2 IN-13, 3/4 IN LONG
1	14	8864951P167	1	+ROLLER BEARING
1	15	4713640P1	1	FLINGER
1	16	6744700P2	1	BEARING CAP, INNER
1	17	41C637314P1	1	FRAME HEAD
1	18	4732906P1	2	+GASKET, 0.021 IN THICK
1	19	2739317P1	1	BEARING CAP
1	20	4732351P1	1	SLEEVE
1	21	N22P33056	8	BOLT, HEX HD, 5/8 IN-11, 3 1/2 IN LONG
1	22	41B537660P9	8	WASHER, FLAT, 0.725 IN ID, 1 IN OD
1	23	N22P39032	11	BOLT, HEX HD, 1 IN-8, 2 IN LONG
1	24	41B537660P21	11	WASHER, FLAT, 1.063 IN ID, 2 IN OD
1,2	25	41E903691G7	2	EXCITING COIL
2	26	41E903691G8	2	EXCITING COIL
1,2	27	41C637285G7	2	COIL WITH POLE PIECE, COMMUTATING
2	28	41C637285G8	2	COIL, COMMUTATING
1,2	29	41C637285G10	2	COIL WITH POLE PIECE, COMMUTATING
2	30	41C637285G11	2	COIL, COMMUTATING
1,2	31	N22P45060	12	BOLT, HEX HD, 1 1/4 IN-7, 3 3/4 IN LONG
1,2	32	41A239559P1	12	BOLT, HEX HD, 1 1/4 IN-12, 4 IN LONG
1,2	33	41B537660P22	24	WASHER, FLAT, 1.453 IN ID, 2.500 IN OD
2	34	41C636243G2	2	CABLE ASSEMBLY
2	35	41C636867G3	2	CONNECTION STRAP
2	36	41C637269G2	1	CONNECTION STRAP
2	37	41C637269G1	1	CONNECTION STRAP
2	38	41C637269G3	1	CONNECTION STRAP
2	39	41C637269G4	1	CONNECTION STRAP
2	40	41C637269P1	1	CONNECTION STRAP
2	41	41C637562G4	1	CABLE ASSEMBLY
2	42	41C637562G3	1	CABLE ASSEMBLY

+ RECOMMEND CUSTOMER STOCK THIS PART.

FIG. NO.	REF. NO.	PART NO.	QUANT REQ. COL. A	DESCRIPTION
2	43	41C637562G5	1	CABLE ASSEMBLY
2	44	41C637562G6	1	CABLE ASSEMBLY
2	45	41C637261G1	1	CONNECTION STRAP, INSULATED
2	46	41C637261G5	1	CONNECTION STRAP, INSULATED
2	47	41C637261G2	1	CONNECTION STRAP, INSULATED
2	48	41D735504G7	1	SHUNT ASSEMBLY
2	49	41C637261P4	1	CONNECTION STRAP, L-SHAPED
2	50	481A539P32	4	CABLE BUSHING, 1 7/32 IN ID, RUBBER
2	51	41A216775P1	AR	+SEALANT, 1/8 BY 3 3/4 IN, 10 FT ROLL
2	52	N22P33028	1	BOLT, HEX HD, 5/8 IN-11, 1 3/4 IN LONG
2	53	N22P33024	1	BOLT, HEX HD, 5/8 IN-11, 1 1/2 IN LONG
2	54	N405P47B13	2	LOCKWASHER, 5/8 IN
2	55	N213P33	2	NUT, HEX, JAM, 5/8 IN-11
2	56	N22P27024B13	4	BOLT, HEX HD, 7/16 IN-14, 1 1/2 IN LONG
2	57	N22P27028B13	6	BOLT, HEX HD, 7/16 IN-14, 1 3/4 IN LONG
2	58	N405P44B13	20	LOCKWASHER, 7/16 IN
2	59	4713845P1	5	BOLTING PLATE
2	60	N22P27020B13	10	BOLT, HEX HD, 7/16 IN-14, 1 1/4 IN LONG
2	61	41A239176P443	AR	SILASTIC PUTTY
2	62	41A239176P133	AR	SILICONE TAPE, 0.015 IN THICK, 1 IN WIDE
2	63	41A239176P22	AR	GLASS TAPE, 0.007 IN THICK, 1 IN WIDE
2	64	41A231281P47	7	BRAZING STRIP
2	65	41A231281P46	8	BRAZING STRIP, 1 IN X 1 IN LONG
2	66	41A239176P399	AR	CORD
1	67	41B537963P1	12	+CARBON BRUSH
1,2,3	68	41C632667G6	4	+BRUSH HOLDER ASSEMBLY
3	69	41B530659G2	12	PRESSURE ARM
3	70	41A231370P2	12	BUSHING, 1.063 IN LONG
3	71	186V831P1	8	SLEEVE
3	72	41A231378P2	4	PIN, 3/8 IN DIA, 6 5/8 IN LONG
3	73	N509P2548	8	PIN, SPRING DOWEL, 1/4 IN DIA, 3 IN LONG
3	74	N509P912	8	PIN, SPRING DOWEL, 3/32 IN DIA, 3/4 IN LONG
3	75	41A230733P7	8	BOLT W/WASHER, HEX HD SL, 5/16 IN-18, 3/4 IN LONG
3	76	41A231370P6	16	BUSHING, 0.575 IN LONG
3	77	41A330248P1	12	SPRING SEAT
3	78	41A233867G4	12	SPRING SEAT WITH PIN
3	79	41B537844G1	12	SPRING SET ASSEMBLY
3	80	41A233880P1	4	PIN, 7 7/16 IN LONG
3	81	41B535754G28	8	BRUSH HOLDER STUD, MOLDED (0.002 IN OVERSIZE)
3	82	41B535754G29	8	BRUSH HOLDER STUD, MOLDED (0.004 IN OVERSIZE)
3	83	41B535754G30	8	BRUSH HOLDER STUD, MOLDED (0.006 IN OVERSIZE)
3	84	41B535754G31	8	BRUSH HOLDER STUD, MOLDED (0.008 IN OVERSIZE)

+ RECOMMEND CUSTOMER STOCK THIS PART.



FIG. NO.	REF. NO.	PART NO.	QUANT REQ. COL. A	DESCRIPTION
1	85	2733755P7	4	SUPPORT, BRUSH HOLDER
1	86	N22P37052	4	BOLT, HEX HD, 7/8 IN-9, 3 1/4 IN LONG
1	87	41B537660P25	4	WASHER, FLAT, 0.968 IN ID, 1.375 IN OD
1	88	41D735773G1	1	ARMATURE ASSEMBLY
1	89	41C636928G1	1	SHAFT WITH PLUG
1	90	8819420P1	2	PLUG, HEX SOC HD, 3/8 IN-24, 1 IN LONG
1	91	41B537605P4	1	ARMATURE HEAD
1	92	41A239323G1	1	PUNCHING, END
1	93	41A330418G1	1	PUNCHING, END
1	94	41B537164P1	553	PUNCHING, MAIN
1	95	41B537165P1	26	PUNCHING, STEP BACK
1	96	41B537165P2	14	PUNCHING, STEP BACK
1	97	41B537889G2	1	COMMUTATOR, SEASONED
1	98	41B537080P1	1	=TEFLON BAND (CONTINUOUS)
1	99	189V584P1	1	NUT
1	100	41D735370G5	1	+REWIND KIT
1	101	41A330208P10	AR	WIRE, 0.072 IN DIA
1	102	41A239176P64	AR	GLASS TAPE, 0.014 IN THICK, 3/4 IN WIDE
1	103	41A239176P62	AR	GLASS TAPE, 0.014 IN THICK, 3/8 IN WIDE
1	104	41A232821P1	1	SLEEVE
1	105	2766829ADP24	AR	#BALANCE WEIGHT, 13 IN OD
1	106	2766829ADP26	AR	#BALANCE WEIGHT, 14 3/4 IN OD
1	107	493A204G1	1	INSPECTION COVER, TOP
1	108	493A204P3	2	GASKET, NEOPRENE, 0.250 X 0.750 X 9 3/4 IN LONG
1	109	493A204P4	2	GASKET, NEOPRENE, 0.250 X 0.750 X 11 IN LONG
1	110	497A806P12	AR	CEMENT
1	111	493A206G1	1	INSPECTION COVER, BOTTOM
1	112	493A206P3	2	GASKET, NEOPRENE, 0.250 X 0.750 X 9 1/2 IN LONG
1	113	493A206P4	2	GASKET, NEOPRENE, 0.250 X 0.750 X 11 1/8 IN LONG
1	114	497A806P12	AR	CEMENT
1	115	41A239914G1	1	INSPECTION COVER, HAND HOLE
1	116	41A239914P2	2	GASKET, NEOPRENE, 0.250 X 0.560 X 9.250 IN LONG
1	117	41A239914P3	2	GASKET, NEOPRENE, 0.250 X 0.560 X 8.120 IN LONG
1	118	497A806P12	AR	CEMENT
1	119	N22P29016B13	4	BOLT, HEX HD, 1/2 IN-13, 1 IN LONG
1	120	N405P45B13	4	LOCKWASHER, 1/2 IN
		N5700P63	3	PIPE PLUG, 3/4 IN, CSK, SQ
1	122	41A239663P2	4	PLUG
		41A237902P1	3	PLATE (WARNING - DO NOT OPEN WHILE -)

# WELD OR BRAZE IN POSITION.

+ RECOMMEND CUSTOMER STOCK THIS PART.

= ADDITIONAL MATERIAL IS REQUIRED TO INSTALL THE CONTINUOUS LOOP TEFLON BAND. SEE APPLICATION INSTRUCTIONS, GEK-76278.

- END OF PARTS BULLETIN -

