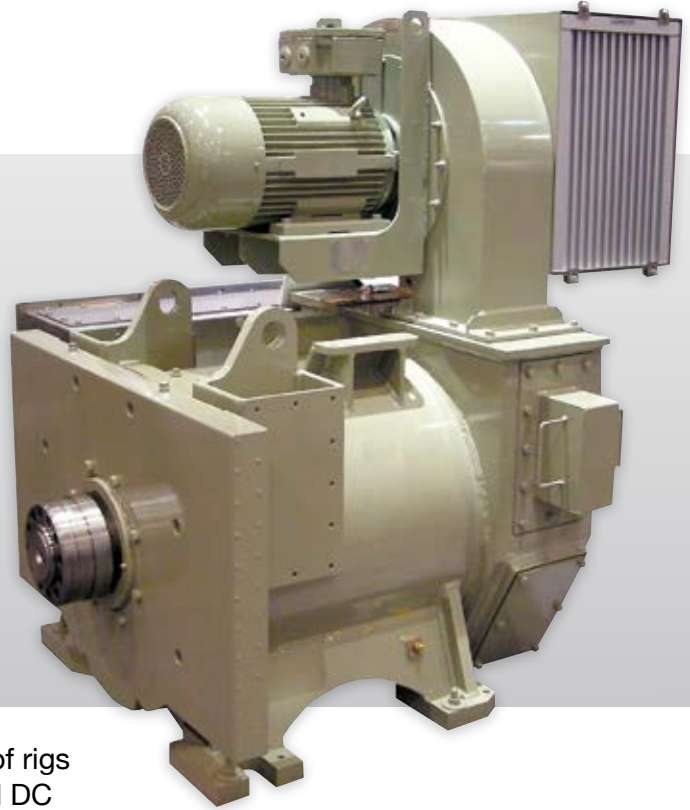




## Fact Sheet

# Unparalleled Performance

## 5GEB22 Series 1150 HP AC Drilling Motors



Reliable, compact and powerful choices for all types of rigs from your global leader. Wabtec Corporation's AC and DC motors have delivered industry-leading technology for more than 60 years.

Pioneering the application of AC technology to oilfield equipment, Wabtec Corporation has more than 4,000 AC units installed on more than 1,000 rigs worldwide. Wabtec's AC motors have been field proven in the harshest conditions, compliant to a broad range of industry certifications: ATEX, IECEx, and CSA, increasing operations across more rigs, geographies and regulated territories.

5GEB22A5 5GEB22D4 5GEB22E1	Continuous Duty (S1)	Continuous Duty (S1)	Intermittent Duty (S9) <small>(120 sec. on - 90 sec. off)</small>
Ambient Air	-40°C to +45°C	-20°C to +55°C	-40°C to +45°C
Rated Volts (AC)	587	587	587
Current (Amps)	1120	1048	1380
Rated Speed (RPM)	800	800	800
Horsepower (kW)	1150 (858)	1075 (802)	1400 (1044)
Speed (RPM) @ rated HP and 640v rms L-L	800 to 2000	800 to 2000	800 to 1500
Torque lb-ft (Nm)	7550 (10240)	7055 (9565)	9200 (12475)
Speed (RPM) @ rated Torque	0 to 800	0 to 800	0 to 800
Required Air Flow (SCFM)	3000	3000	3000
Maximum Voltage rms L-L	690vac	690vac	690vac
Maximum Speed (RPM)	3000	3000	3000

### Quick Facts

- **5GEB22A** – The original GEB22 AC model with 5GE752 footprint, shaft height and bearings
- **5GEB22D** – same as 5GEB22A except oversized shaft extension for belted side loads
- **5GEB22E** – same as 5GEB22A except smaller roller bearing for direct coupled shaft with no side load
- 6-pole stator with “form-wound” windings
- Copper chromium alloy rotor bars
- Class H insulation, robotically taped, Mica-Kapton system
- 4340 alloy shafts
- Insulated bearings on non-drive end
- Single shaft extension with hub
- IP56 stainless steel connection box, field convertible from A to B side
- Winding RTDs, 100-ohm platinum; 2 per phase
- Pressure sensor to verify ventilation
- 15 HP (13 kW) blower assembly – 3,000 scfm
- Air Intake louvers to protect from water ingress
- Tape heaters 200 watts on each end of motor
- IP44 assembly rating
- Same shaft height and mounting feet dimensions as the 5GE752 - 5GEB22D Shaft diameter and hub are larger

# 5GEB22 Series AC Drilling Motors

Demanding Applications

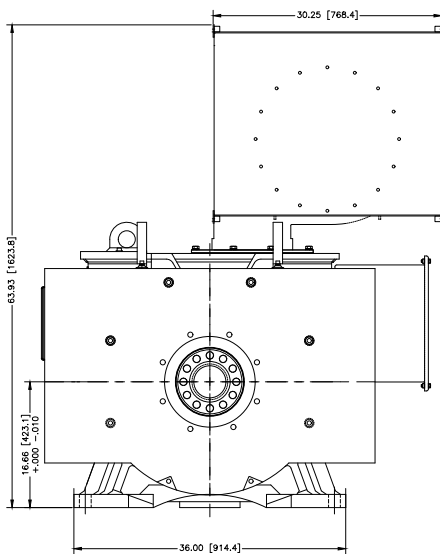


**Oil & Gas** Drill rig drawworks, Mud Pumps, Rotary Tables and Top Drives

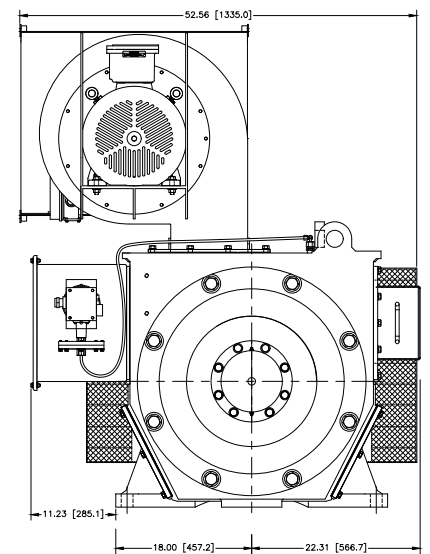
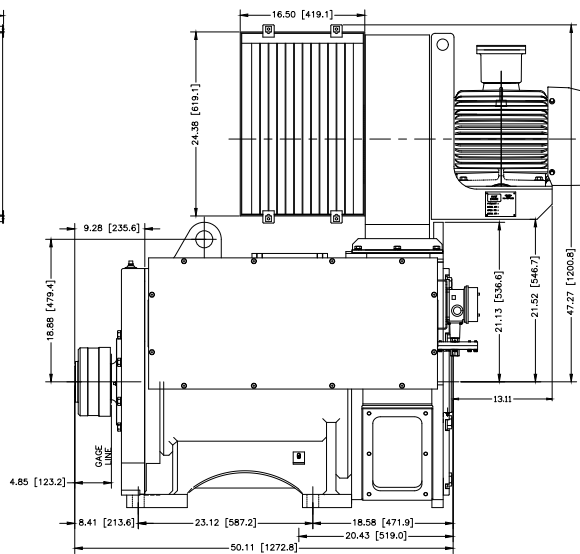
**Marine** Propulsion, Winches, Thrusters

**Dredge** Cutters, Pumps

**Industrial** Conveyors, Mixers, Compressors, Pumps, Cranes



DRIVE END



NON-DRIVE END

